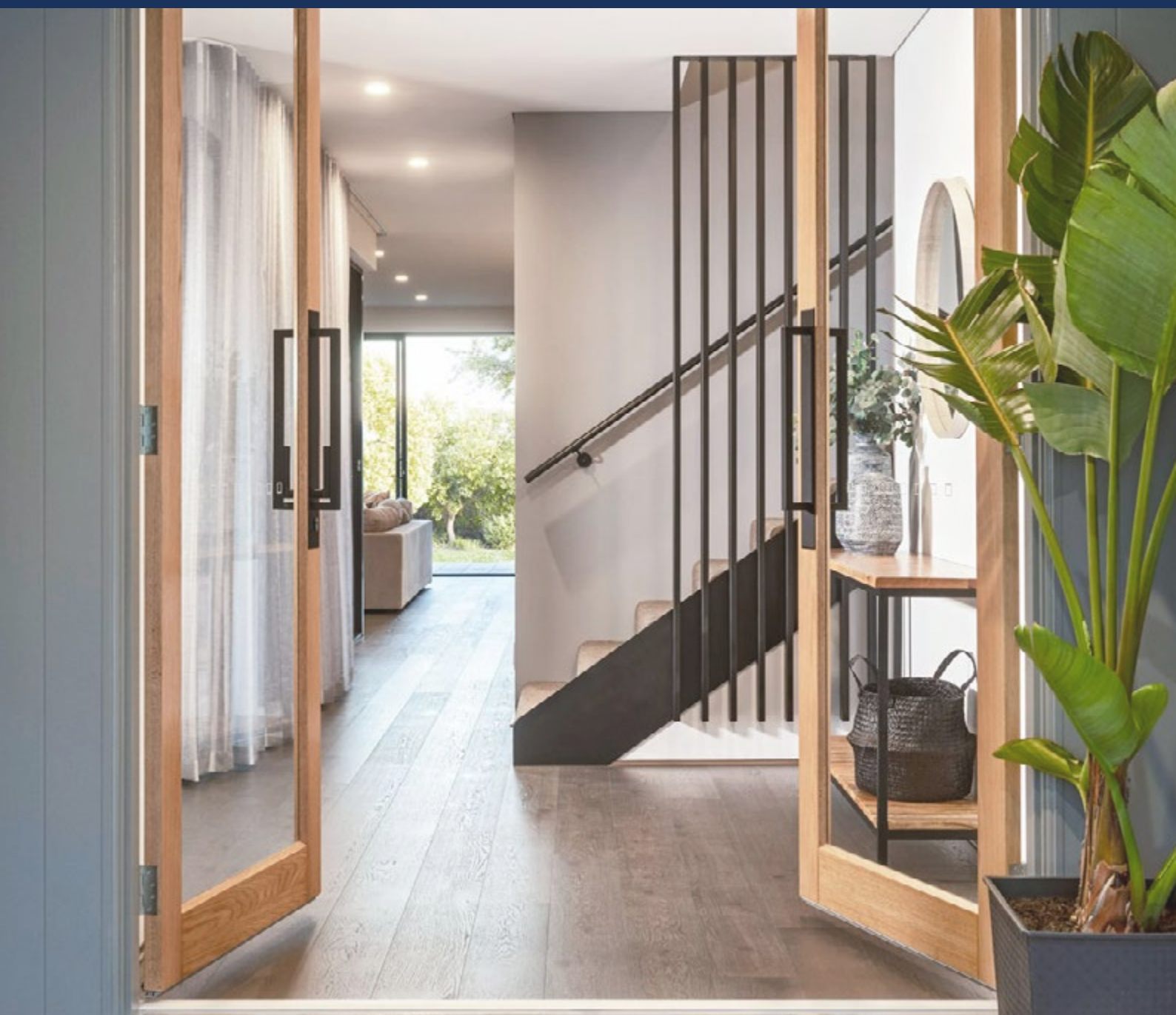


Residential Product Catalogue 2023



CONTENTS:

| | |
|---|-----------|
| INTRODUCTION | 01 |
| About Allegion | |
| About Gainsborough Hardware | |
| FINISHES | 02 |
| Complete your door hardware selections with a range of finishes | |
| AVANT | 03 |
| Premium finishes for modern Australian homes | |
| NEUE | 04 |
| Contemporary styles and finishes for the entire home | |
| CHOICE | 05 |
| Form, function and design combined to make your style statement | |
| FREESTYLE TRILOCK SMART LOCK | 06 |
| Smart lock technology giving you unparalleled convenience and peace of mind | |
| TRILOCK | 07 |
| Setting the standard right from your front doorstep | |
| TRILOCK OMNI | 08 |
| The Trilock Omni makes a statement entrance on large format doors | |
| PULL HANDLES | 09 |
| A stylish, minimalist Pull Handle that will give an authentic cinema feel to your home | |
| TRADEPRO™ | 10 |
| TradePro™ is a trade range from Gainsborough, a leading distributor of high-quality door hardware and access solutions in Australia | |
| SLIDING CAVITY SETS | 11 |
| An extensive range of reliable sliding Cavity Door Sets with stylish escutcheons | |
| FLUSH PULLS | 12 |
| Gainsborough's range of Flush Pulls are the perfect accompanying hardware which will work seamlessly throughout your home | |

CONTENTS:

| | |
|--|----|
| CLASSIC KNOBS | 13 |
| <hr/> | |
| Traditional in appearance our internal and external doorknobs are suitable for many rooms throughout your home | |
| <hr/> | |
| WARRANTY | 14 |
| <hr/> | |
| Mechanical | |
| <hr/> | |
| Tarnish | |
| <hr/> | |



ALLEGIONTM

Introduction

About Allegion

Allegion's expert team of over 500 across Australia and New Zealand are dedicated to providing the best solution for local needs.

With engineering and assembly teams in Melbourne, Sydney and Auckland, and support offices in Auckland, Wellington, Christchurch, Dunedin, Brisbane, Sydney, Melbourne, Adelaide and Perth, Allegion is committed to providing products and services of the highest quality, either individually or as part of a co-ordinated package, tailored to suit your individual building needs and combining the elements of design, specification, manufacture and supply.

Our team of technically trained Architectural Consultants are available to assist you with the increasingly technical areas of product specification and door hardware scheduling.

With leading global brands such as Schlage, LCN and Legge and locally developed brands Gainsborough, API, Austral, Brio and FSH, Allegion is committed to the safety and security of Australia, New Zealand and the Pacific Islands.

Our Vision and Purpose

Every pioneer needs a good sense of direction - and everyday, we put our principles into practice. Doing so makes us a stronger company, and a better place to work.

Vision: We make the world safer as a company of experts, securing the places where people thrive.

Purpose: We create peace of mind by pioneering safety and security.



GainsboroughTM
ENTER WITH STYLE

Introduction

About Gainsborough Hardware

Designed and tested here in Australia, Gainsborough door handles, deadbolts and door locks are made for everyday living.

Backed by 50 years of product innovation, we fuse style and security into reliable, beautiful, and versatile hardware that works silently with your home.

We've got you covered.

We are experts on security and safety compliant hardware.

With a range of accessibility and building code compliant hardware, you can rest assure you are getting the right hardware for your project.

Whole of house offering.

Gainsborough offers the complete solution for your door hardware needs. From the front to the back of the house or development, we have all the products you need to complete your project.

Service and after-sales support

Gainsborough, part of the Allegion family of brands, allows us to be able to better support you. You can be rest assured you are in safe hands. We provide free training and scheduling services. We have a team of technicians and customer service to assist you throughout your project.

With a team located around the country, as well as product and customer support located here in Australia, we can support you and your customers every step of the way. We are able to product free installation and selection training, on top of our free scheduling service.



Products Featured:

Oblong 600mm in Matt Black- OBL600PHMB





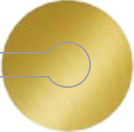
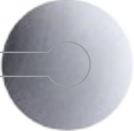



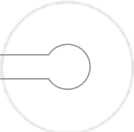

Neue Smooth Square Double Cylinder Deadbolt in Matt Black - 1846SMMB

Trilock Contemporary Angular Double Cylinder in Matt Black - 8951ANGMB



Product Featured:
Flush Pull 700 Series 350mm in Aged Brushed Copper- 730FP350ABC
Avant Sierra Passage in Aged Brushed Copper - 700SIELRABC

Finishes

| | |
|--|---|
| PSS Polished Stainless Steel |  |
| BC Bright Chrome |  |
| BSC Brushed Satin Chrome |  |
| MB/AMB Matt Black / All Matt Black |  |
| SB Satin Brass |  |
| SC Satin Chrome |  |
| SG Satin Graphite |  |
| SS Stainless Steel |  |
| BG Bright Goldtone |  |
| WH White* |  |
| ABC Aged Brushed Copper |  |

*Available in Classic Knob Series only.

Gainsborough

Avant Series

Leversets



Designed for everyday living and with the user in mind, the Gainsborough Avant collection of thoughtfully designed levers and premium, on-trend finishes is the perfect finishing touch for any home interior.

Featuring the award winning, patented QuickFix™ technology means installation is simple and quick. Backed by a 15-year mechanical warranty, the Gainsborough Avant range is quality you can feel.

Features

- Three architecturally inspired lever designs
- Available in passage, privacy and dummy
- Features new QuickFix™ technology - install door lever in under 30 seconds after installation of the latch and strike
- 2021 Australian Good Design Award winner
- Fixed screws concealed by rosette

Specifications Guide

*Small Rose has no code. 'SR' for reference

Visual Pack

| Series | Function | Lever | Rose | Finish |
|---------------|--|--|---|--------------------|
| Avant 7 | Passage set 00 Privacy set 10 Dummy 20 | Alba ALB Rivera RIV Sierra SIE | Large Rose LR Small Rose* SR | Refer to next page |

1. Series
Select the desired series e.g. Avant 7
2. Function
Select the desired function e.g. Passage 00
3. Lever
Select the desired lever design e.g. Alba ALB
4. Rose
Select the desired rose size e.g. Large Rose LR
5. Finish
Select the desired finish e.g. Satin Brass SB
700ALBLRSB

Specifications

| | Passage | Privacy | Dummy |
|---------------------|-------------------------|--------------------|-------------|
| Door Type | Timber | | |
| Door Thickness (mm) | 32 - 45 | | |
| Bore Hole (mm) | LR - 50 - 54 SR - 25 | LR - 54 SR - 25 | N/A |
| Edge Bore (mm) | 25 | | N/A |
| Backset (mm) | 60 | 60 | N/A |
| Locking | Non-Locking | Privacy | Non-Locking |
| Rose (mm) | LR - 64 SR - 57 | | |

Rose/Rosette = a cap that covers the base of a door handle allowing concealed fixing screws.

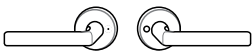
LR = Large Rose
SR = Small Rose

Avant Series lever functions

Passage set (sold with or without latch)
Both levers always unlocked.



Privacy set (sold with latch)
Internal push button to lock outside lever with emergency release.



Dummy set
Inactive lever which is used as a door pull or matching trim.

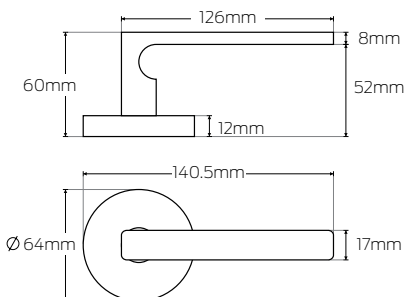


Icons show right handed levers

Avant Series lever designs

Rivera (Large Rose)

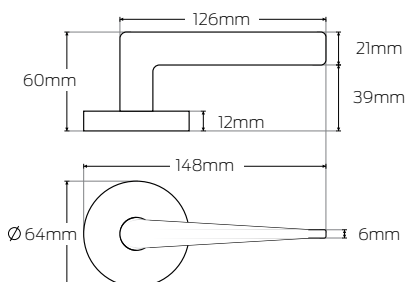
● SB ● MB ● BC ● SG ● BSC



Product featured: 700RIVLRSG

Sierra (Large Rose)

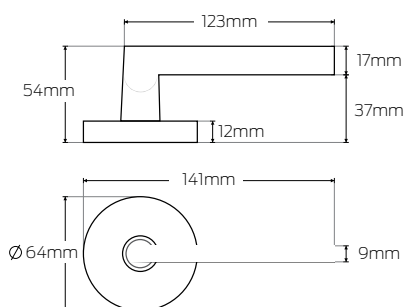
● SB ● MB ● BC ● SG ● BSC



Product featured: 710SIELRBSC

Alba (Large Rose)

● SB ● MB ● BC ● SG ● BSC



Product featured: 700ALBLRSB

Product Codes:

Rivera (Visual Pack)

700RIVLR (Passage)
710RIVLR (Privacy)
720RIVLR (Dummy)

*Add finish to the end of product code
e.g. 700RIVLR**SB**

*Passage is available with and without a latch. WL = With Latch
e.g. 700RIVLR**SBWL**

Sierra (Visual Pack)

700SIELR (Passage)
710SIELR (Privacy)
720SIELR (Dummy)

*Add finish to the end of product code
e.g. 710SIELR**BSC**

*Passage is available with and without a latch. WL = With Latch
e.g. 700SIELR**BSCWL**

Alba (Visual Pack)

700ALBLR (Passage)
710ALBLR (Privacy)
720ALBLR (Dummy)

*Add finish to the end of product code
e.g. 700ALBLR**SB**

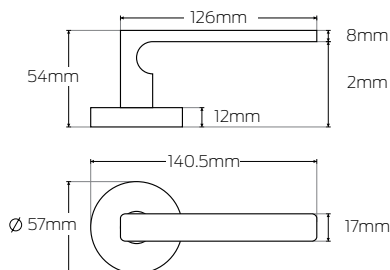
*Passage is available with and without a latch. WL = With Latch
e.g. 700ALBLR**SBWL**

Avant Series lever designs

*Small Rose has no code

Rivera (Small Rose)

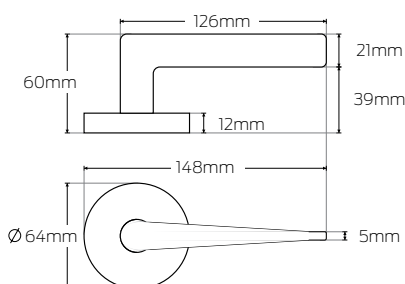
● MB ● SC ● ABC



Product featured: 700RIVABC

Sierra (Small Rose)

● MB ● SC ● ABC



Product featured: 710SIESC

Product Codes:

Rivera (Visual Pack)

700RIV (Passage)

710RIV (Privacy)

720RIV (Dummy)

*Add finish to the end of product code
e.g. 700RIVABC

*Passage is available with and without a
latch. WL = With Latch
e.g. 700RIVABCWL

Sierra (Visual Pack)

700SIE (Passage)

710SIE (Privacy)

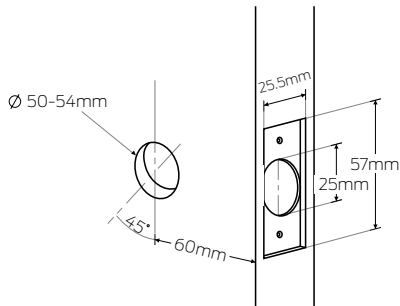
720SIE (Dummy)

*Add finish to the end of product code
e.g. 700SIESC

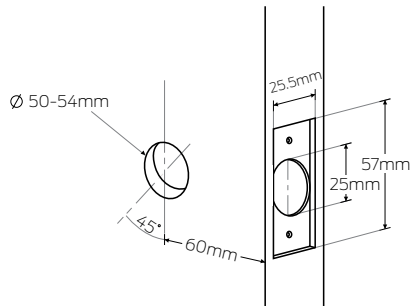
*Passage is available with and without a
latch. WL = With Latch
e.g. 700SIESCWL

Avant Series door preparation

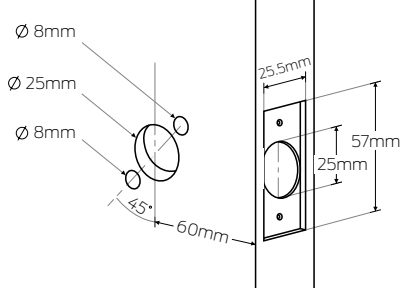
Passage door preparation (Large Rose)



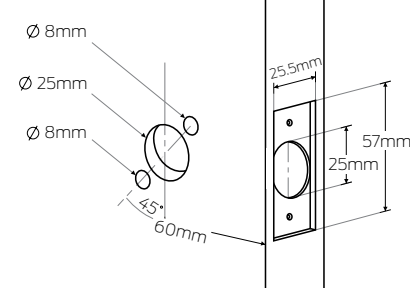
Privacy door preparation (Large Rose)



Passage door preparation (Small Rose)



Privacy door preparation (Small Rose)



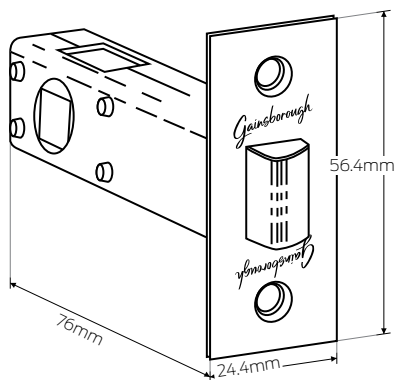
Refer to instructions: PDGA0090

Avant Series Accessories

Passage Latch (QuickFix™)

60mm Backset

● SB ● MB ● BC ● SG ● SC ● ABC



Product featured: 480QF



For more information visit
www.gainsboroughhardware.com.au

Gainsborough

Neue Series

Leversets



Features

- Contemporary styles and finishes for the entire home
- Compatible with our best-selling entrance hardware Trilock & Omni

Our Neue Collection of levers, lever locksets and deadbolts features a range of contemporary designs and on trend finishes to suit modern home interiors.

Available in bright chrome, satin chrome, brushed satin chrome and matt black, the Neue door furniture offers superior style and functionality.

Specifications Guide

*Product code format works only horizontal from left to right in chosen row.

Visual Pack

| Series | Rose | Function | Lever Style | Finish |
|--------------|---------------------------------|---|---------------------------------------|--------------------|
| Neue 1 | Round 9 Square 8 | Passage set 05 Privacy set 15 Dummy set 20 Entrance 40 | Angular ANG Aurora AUR | Refer to next page |

| Series | Rose | Deadbolts | Cylinder | Finish |
|--------------|---------------------------------|---------------------|--|--------------------|
| Neue 1 | Round 9 Square 8 | Deadbolts N/A | Double 51SM Single 46SM | Refer to next page |

Trade Pack

| Series | Rose | Function | Lever Style | Finish |
|--------------|---------------------------------|--|---------------------------------------|--------------------|
| Neue 1 | Round 9 Square 8 | Passage set 00 Privacy set 10 | Angular ANG Aurora AUR | Refer to next page |

1. Series

Select the desired series e.g. Neue 1

2. Rose

Select the desired rose e.g. Round 9

3. Function

Select the desired function design e.g. Passage 05

4. Lever Style

Select the desired lever style e.g. Angular ANG

5. Finish



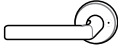

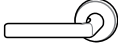
Select the desired finish e.g. Bright Chrome BC
1905ANGBC

Specifications

| | Passage | Privacy | Dummy | Entrance | Deadbolt |
|----------------------------|-------------|---------|-------------|----------|----------|
| Door Type | Timber | | | | |
| Door Thickness (mm) | 32 - 45 | | N/A | 32 - 45 | |
| Bore Hole (mm) | 50 - 54 | | N/A | 50 - 54 | 54 |
| Edge Bore (mm) | 25 | | N/A | 25 | |
| Backset (mm) | 60 | | | | |
| Locking | Non-Locking | Locking | Non-Locking | Locking | Locking |
| Rose (mm) | 65 | | | | 62 |

Neue Series lever functions

*Icons show right handed levers

| | Outside | Inside |
|--|---|---|
| Passage set (sold with or without latch) Both levers always unlocked. |  |  |
| Privacy set (sold with latch) Internal push button to lock outside lever with emergency release. |  |  |
| Dummy set Inactive lever which is used as a door pull or matching trim. |  | |

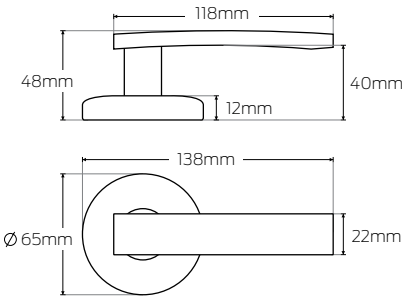
Neue Series lever designs

Angular Round

● BC ● AMB ● SC



Product featured: 1905ANGSC



Product Codes:

Angular Round (Visual Pack)

1905ANG (Passage)
1915ANG (Privacy)
1920 (Dummy)

Angular Round (Trade Pack)

1900ANG (Passage)
1910ANG (Privacy)

*Add finish to the end of product code
e.g. 1905ANGSC

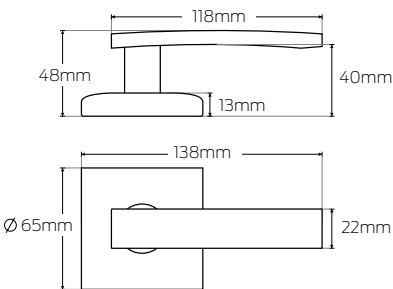
*Latch sold seperately in Trade Pack for
passage lever only

Angular Square

● BC ● AMB ● SC



Product featured: 1815ANGAMB



Angular Square (Visual Pack)

1805ANG (Passage)
1815ANG (Privacy)
1820ANG (Dummy)

Angular Square (Trade Pack)

1800ANG (Passage)
1810ANG (Privacy)

*Add finish to the end of product code
e.g. 1815ANGAMB

*Latch sold seperately in Trade Pack for
passage lever only

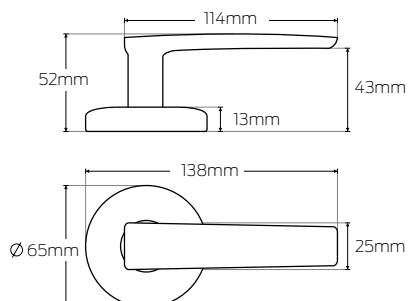
Neue Series lever designs

Aurora

● BSC ● MB



Product featured: 1940AURBSC



Product Codes:

Aurora (Visual pack)

1905AUR (Passage)
1915AUR (Privacy)
1920AUR (Dummy)
1940AUR (Entrance)

Aurora (Trade Pack)

1900AUR (Passage)
1910AUR (Privacy)

*Add finish to the end of product code
e.g. 1940AUR**BSC**

*Add **S** for Standard Pk at the end of code
e.g. 1940AURBSC**S**

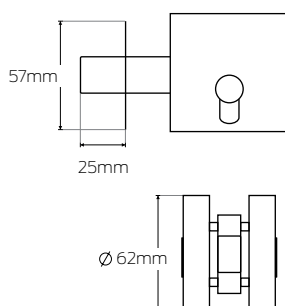
*Add **K** for keyed at the end of code
e.g. 1940AURBSC**K**

Deadbolt Square

● MB ● SC ● BC



Product featured: 1851SMMB



Deadbolt Square

1846SM (Single Cylinder)
1851SM (Double Cylinder)

*Add finish to the end of product code
e.g. 1851SM**BC**

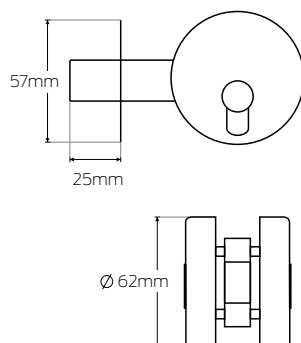
*Add **V** for Visual Pack to the end of product code e.g. 1851SMBC**V**

Deadbolt Round

● MB ● SC ● BC ● BSC



Product featured: 1946SMBC



Deadbolt Round

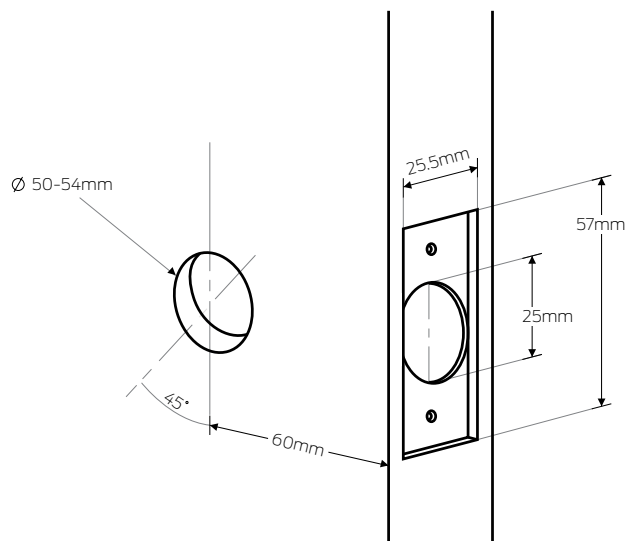
1946SM (Single Cylinder)
1951SM (Double Cylinder)

*Add finish to the end of product code
e.g. 1946SM**BC**

*Add **V** for Visual Pack to the end of product code e.g. 1946SMBC**V**

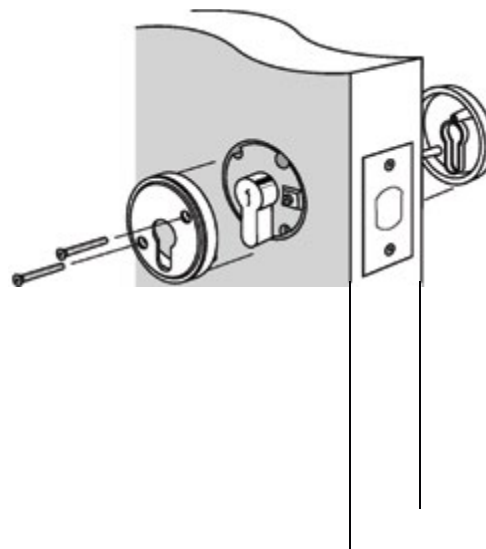
Neue Series door preparation

Passage & Privacy lever door preparation



Refer to PDGA0017R1 & PDGA0018R1

Double & single cylinder deadbolt preparation



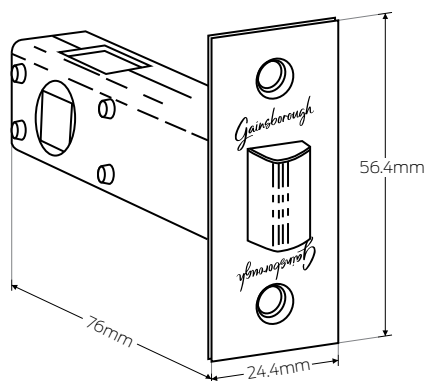
Refer to PDGA0014R1

Neue Series accessories

Passage Latch

60mm Backset

● MB ● BC ● SC



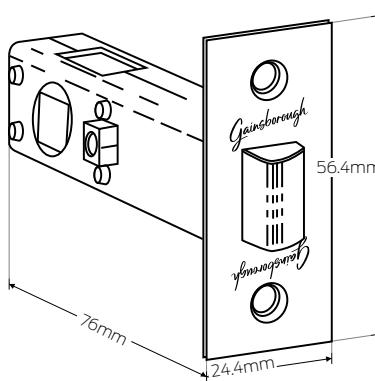
Product featured: 480

*Add finish to the end of product code e.g.
480MB

Privacy Latch

60mm Backset

● MB ● BC ● SC



Product featured: PT780/PL

*Add finish to the end of product code e.g.
PT780/PLBC



For more information visit
www.gainsboroughhardware.com.au

Gainsborough

Choice Series

Leversets



This affordable range has a unique style, ranging from classic lever design, smooth contours or a more contemporary styled lever with crisp edges.

From tapered Lianna and Bailey levers through rounded Olive, Florence and Carla to the classic look of the First Impressions entry handle set, the range offers the perfect solution for every home, adding elegance to any doorway.

Features

- Privacy leversets include a privacy latch as standard and feature internal locking button, panic release from inside and emergency access from outside to suit bedroom or bathroom doors
- Passage lever for general internal, non-locking doors
- Made from tried-and-tested zinc alloy for durability

Specifications Guide

*Product code format works only horizontal from left to right in chosen row.

Visual Pack

| Series | Function | Lever Style | Handing | Finish |
|----------------|--|--|---|--------------------|
| Choice 1 | Passage set 05 Privacy set 15 Dummy set 20 | Lianna LIA Amelia AME Carla CAR Florence FLO Bailey BAI Olive OLI | Left Handed L Right Handed R | Refer to next page |

| Series | Function | Lever/Knob Style | Finish |
|----------------|---|--|--------------------|
| Choice 5 | Passage set 00 Privacy set 10 Dummy set 05 Entrance set 40 | Ambassador AMB Terrace TER | Refer to next page |

| Series | Function | Knob Style | Finish |
|----------------|--|---|--------------------|
| Choice 8 | Privacy set 10 Dummy set 05 Entrance set 40 Combination 701 | Governor GOV First Impressions .85 | Refer to next page |

| Series | Deadbolts | Cylinder | Finish |
|----------------|---------------------|------------------------------------|--------------------|
| Choice 5 | Deadbolts N/A | Single 45 Double 50 | Refer to next page |

Trade Pack

| Series | Function | Lever Style | Handing | Finish |
|----------------|--|--------------------------------------|---|--------------------|
| Choice 1 | Passage set 00 Privacy set 10 Dummy set 20 | Lianna LIA Amelia AME | Left Handed L Right Handed R | Refer to next page |

1. Series

Select the desired series e.g. **Choice** 1

2. Function

Select the desired function e.g. **Passage** 05

3. Lever/knob Style

Select the desired lever/knob style e.g. **Lianna** LIA

4. Handing (only applicable to dummy levers)

Select the desired handing e.g. **Left Handed** L

5. Finish


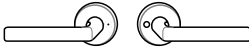
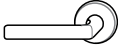
Select the desired finish e.g. **Matt Black** MB
105LIAMB

Specifications

| | Passage | Privacy | Dummy |
|---------------------|-------------|---------|-------------|
| Door Type | Timber | | |
| Door Thickness (mm) | 32 - 45 | | |
| Bore Hole (mm) | 50 - 54 | | N/A |
| Edge Bore (mm) | 25 | | N/A |
| Backset (mm) | 60 | | N/A |
| Locking | Non-Locking | Privacy | Non-Locking |
| Rose (mm) | 60 | | |

Choice Series lever functions

*Icons show right handed levers

| | |
|--|---|
| Passage set (sold with or without latch) Both levers always unlocked. |  |
| Privacy set (sold with latch) Internal push button to lock outside lever with emergency release. |  |
| Dummy set Inactive lever which is used as a door pull or matching trim. |  |

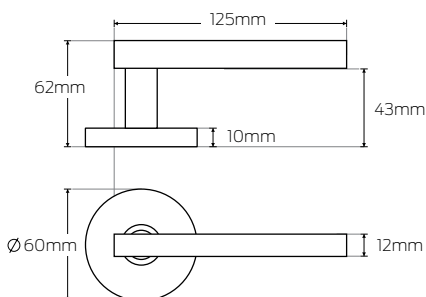
Choice Series lever designs

Lianna

● MB ● BC ● SC



Product featured: 115LIASC

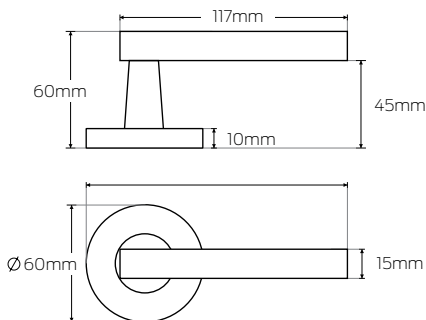


Amelia

● MB ● BC ● SC



Product featured: 115AMESC

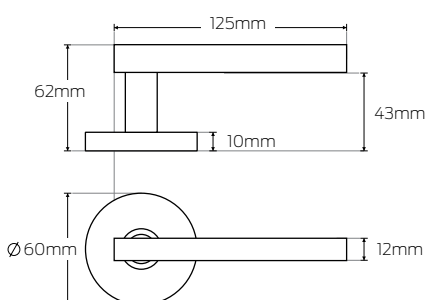


Carla

● BC ● SC



Product featured: 120CARLBC



Product Codes:

Lianna (Visual Pack)

105LIA (Passage)
115LIA (Privacy)

Lianna (Trade Pack)

100LIA (Passage)
110LIA (Privacy)
120LIAL (Dummy Left Handed)
120LIAR (Dummy Right Handed)

*Add finish to the end of product code
e.g. 115LIASC

*Latch sold separately in Trade Pack for
passage lever

Amelia (Visual Pack)

105AME (Passage)
115AME (Privacy)

Amelia (Trade Pack)

100AME (Passage)
110AME (Privacy)
120AMEL (Dummy Left Handed)
120AMER (Dummy Right Handed)

*Add finish to the end of product code
e.g. 115AMESC

*Latch sold separately in Trade Pack for
passage lever

Carla (Visual Pack)

105CAR (Passage)
115CAR (Privacy)

Carla (Trade Pack)

120CARL (Dummy Left Handed)
120CARR (Dummy Right Handed)

*Add finish to the end of product code
e.g. 120CARLBC

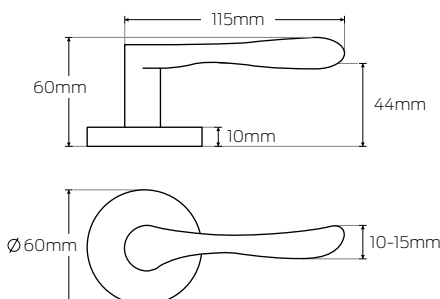
Choice Series lever designs

Florence

● BC ● SC



Product featured: 105FLOSC



Product Codes:

Florence (Visual Pack)

105FLO (Passage)

115FLO (Privacy)

Florence (Trade Pack)

120FLOL (Dummy Left Handed)

120FLOR (Dummy Right Handed)

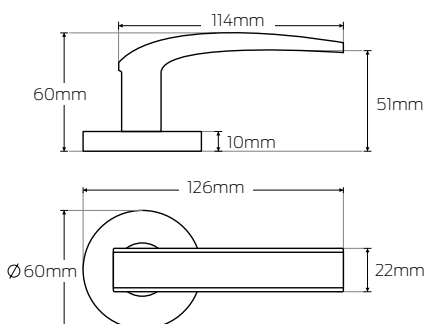
*Add finish to the end of product code
e.g. 105FLOSC

Bailey

● BC ● SC



Product featured: 120BAILBC



Bailey (Visual Pack)

105BAL (Passage)

115BAL (Privacy)

Bailey (Trade Pack)

120BAIL (Dummy Left Handed)

120BAIR (Dummy Right Handed)

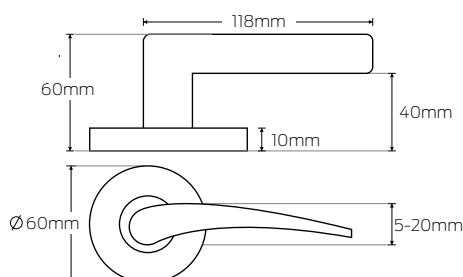
*Add finish to the end of product code
e.g. 120BAILBC

Olive

● BC ● SC



Product featured: 115OLISC



Olive (Visual Pack)

105OLI (Passage)

115OLI (Privacy)

Olive (Trade Pack)

120OLIL (Dummy Left Handed)

120OLIR (Dummy Right Handed)

*Add finish to the end of product code
e.g. 115OLISC

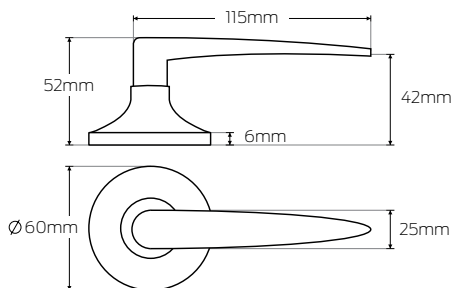
Choice Series lever designs

Ambassador

● BC ● SC



Product featured: 500AMBBCV



Product Codes:

Ambassador (Visual Pack)

500AMB (Passage)
510AMB (Privacy)
540AMB (Entrance)

Ambassador (Trade Pack)

500AMB (Passage)
510AMB (Privacy)
505AMB (Dummy)
540AMB (Entrance)

*Add finish to the end of product code
e.g. 500AMBBCV

*Add V to the end of product code for Visual
Pack e.g. 500AMBBCV

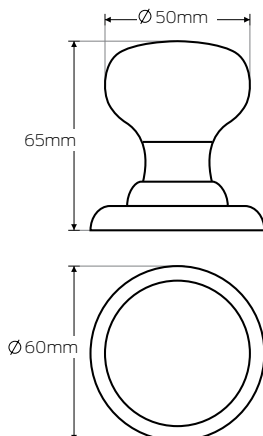
*Add S to the end of product code for Trade
Pack e.g. 500AMBBCS

Governor

● SS



Product featured: 805GOVSS



Governor (Trade Pack)

800GOV (Passage)
810GOV (Privacy)
805GOV (Dummy)
840GOV (Entrance)
8701S (Combination Entrance)

*Combination Entrance includes deadbolt
on next page

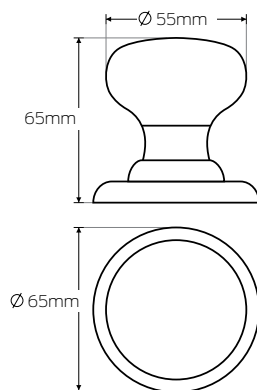
*Add finish to the end of product code
e.g. 805GOVSS

Terrace

● SS ● PSS



Product featured: 570TERSSV



Terrace (Visual Pack) - V

500TER (Passage)
510TER (Privacy)
540TER (Entrance)
570TER (Combination Entrance)

Terrace (Trade Pack)

500TER (Passage)
510TER (Privacy)

*Add finish to the end of product code
e.g. 570TERSSV

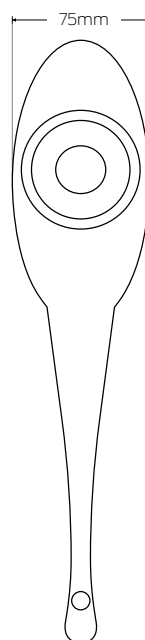
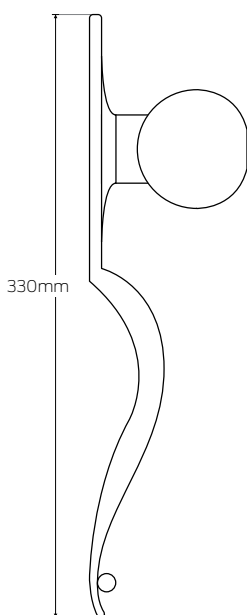
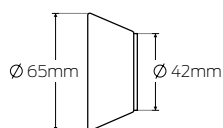
*Add V to the end of product code for Visual
Pack e.g. 570TERSSV

*Add S to the end of product code for Trade
Pack e.g. 570TERSSS

Choice Series lever designs

First Impressions

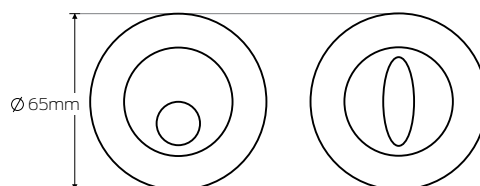
● SS



Product featured: 885ASSV

Deadbolt

● PB ● PSS ● SS



Product featured: 545PB

Product Codes:

First Impressions (Visual Pack) 885 (Entry Set)

*Add finish to the end of product code
e.g. 885ASSV

*Add S to the end of product code for Trade
Pack e.g. 885ASSV

*Knobset available with a 60mm backset
only

Deadbolt (Visual Pack) 550 (Double Cylinder)**

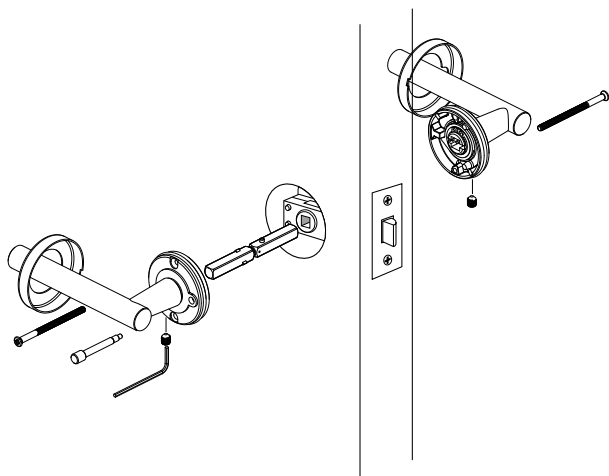
Deadbolt (Trade Pack)
545 (Single Cylinder)
550 (Double Cylinder)

*Add finish to the end of product code
e.g. 545PB

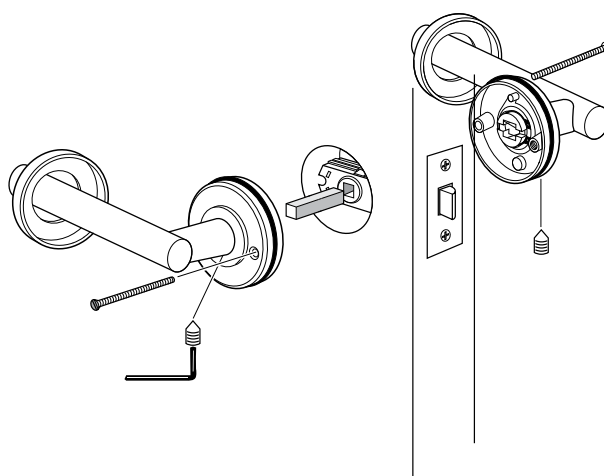
**Available in PSS and SS finishes only

Choice Series door preparation

Passage & Privacy door preparation



Refer to instructions: PDGA0024R1 for Privacy



Refer to instructions: PDGA0025R1 for Passage

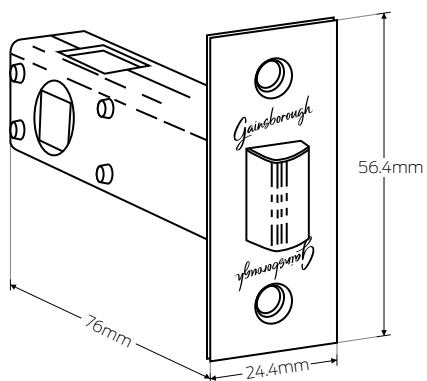
Choice Series accessories

*No spare components are available

Passage Latch

60mm Backset

● MB ● BC ● SC



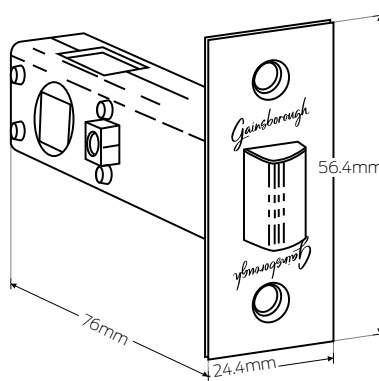
Product featured: 480

*Add finish to the end of product code e.g.
480**MB**

Privacy Latch

60mm Backset

● MB ● BC ● SC



Product featured: PT780/PL

*Add finish to the end of product code e.g.
PT780/PL**BC**



For more information visit
www.gainsboroughhardware.com.au

TRILOCK™

GAINSBOROUGH
freestyle

Freestyle Trilock

Entrance Sets



Combining signature style with the latest technology. The new Gainsborough Freestyle Electronic Trilock® Urban Aurora smart lock combines our signature style with the latest technology, offering you quality finishes combined with unparalleled convenience and peace of mind.

Featuring a stylish metal design in matt black finish, this versatile lock is packed with discreet smart technology and will suit many home styles.

Features

- Pair it with Gainsborough Freestyle app for smart bluetooth control. Works on iOS and Android
- 3 modes of locking, passage, privacy and deadlock
- Assign, invite and schedule up to 20 users
- Manage access anywhere in the world. (When paired with the Gainsborough Freestyle Wi-Fi bridge)

Specifications Guide

Visual Pack

| Series | Backplate Style | Lever Style | Finish |
|---------------------|------------------|------------------|--------------------|
| Freestyle GFS | Urban 8951 | Aurora AUR | Refer to next page |

- 1. Series**
Select the desired series e.g. Freestyle GFS
- 2. Rose**
Select the desired backplate style e.g. Urban 8951
- 3. Function**
Select the desired lever style e.g. Aurora AUR
- 4. Finish**
Select the desired finish e.g. Matt Black MB
GFS8951AURMB

Specifications

| | Entrance |
|---------------------|----------|
| Door Type | Timber |
| Door Thickness (mm) | 32-45 |
| Bore Hole (mm) | 50-54 |
| Edge Bore (mm) | 25 |
| Backset (mm) | 60 |
| Locking | Locking |
| Rose (mm) | 64 |

Freestyle Trilock Smart Lock Series lever functions

External
Closed

Open

Internal

Passage
Both levers always unlocked.

Privacy
Internal push button to lock outside lever.
Unlock by external keypad or internal by operating lever.

Deadlock
Can be set via keypad. Unlock by external key, keypad or internal key.

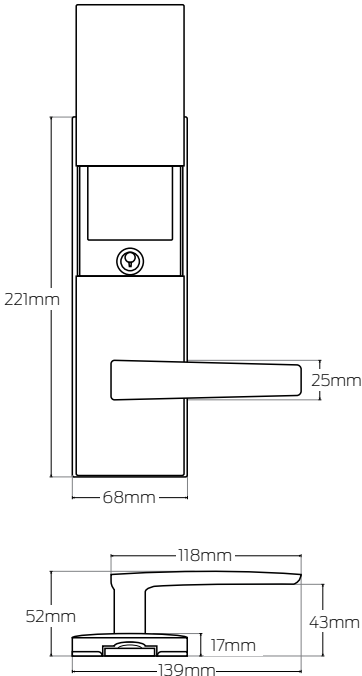
Freestyle Trilock Smart Lock Series lever design

Freestyle Electronic Trilock

● BSC ● MB



Product featured: GFS8951AURBSC



Product Codes:

Freestyle Electronic Trilock (Visual Pack)

GFS8951AURBSC

GFS8951AURMB

*Add finish to the end of product code
e.g. GFS8951AUR**BSC**

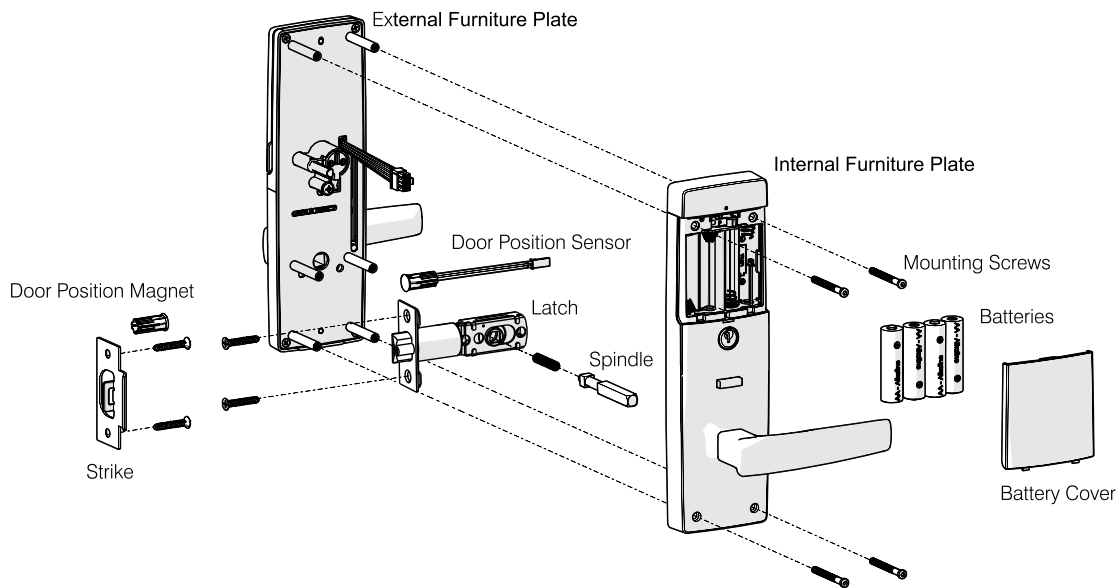
Freestyle Trilock Smart Lock Series accesories



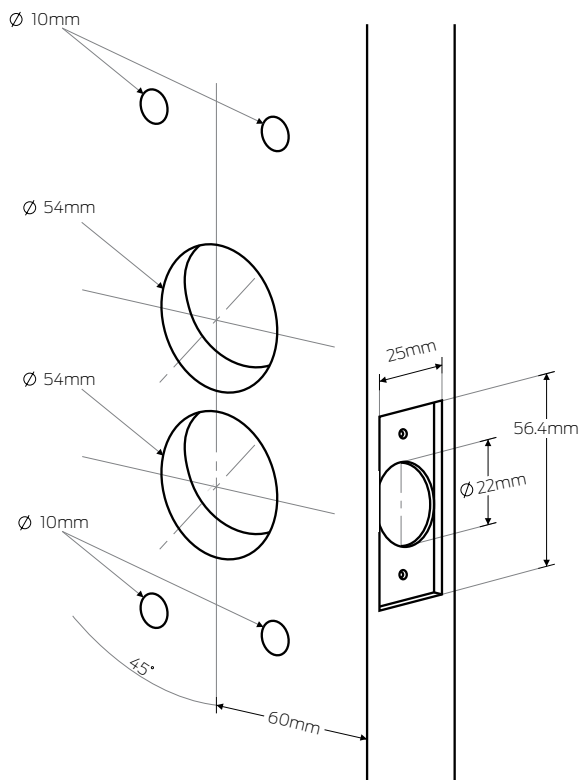
Product featured: GFS001WHV

Freestyle Trilock Smart Lock Series door preparation

Exploded View



Refer to instructions: PDGA0079



Refer to instructions: PDGA0080



For more information visit
www.gainsboroughhardware.com.au

Gainsborough

Trilock Series

Entrance Sets



Gainsborough Trilock design offers a combination of lockset, deadbolt and passage functions in one system.

Trilocks set the standard from your front doorstep, inspiring you to express your signature style with complementary levers throughout your home. All Trilocks feature state of the art tarnish-resistant finishes that can be matched in look and feel to your favourite interior levers.

Features

- Solid brass double 5 pin Euro profile cylinder can be keyed alike no other Gainsborough products for same key convenience
- The push button lockset mode from inside of the door features a panic release by simply turning the inside knob or lever
- Levers can be easily rotated during installation for use on left or right hand doors
- When unlocked and unsnibbed, Trilock operates as a normal passage set
- Lock body readily replaces old keylocks fitted to a standard 54mm hole
- Single handed operation (key operates all functions of the lock)
- Deadbolt 20mm throw for extra security

Product Featured:
Trilock Double Cylinder Contemporary Angular in Matt Black - 8901ANGMB

Specifications Guide

*Trilock function Cylinder available in Single and Double Cylinder.
*Product code format works only horizontal from left to right in chosen row.

Visual Pack

| Series | Function | Backplate style | Lever style | Finish |
|-----------------|-------------------------------------|----------------------|---------------------------------------|--------------------|
| Trilock 8 | Cylinder 95 Dummy 20 | Urban 1 | Aurora AUR | Refer to next page |
| Series | Function | Backplate style | Lever style | Finish |
| Trilock 8 | Cylinder 95 Dummy 20 | Contemporary 1 | Angular ANG Align ALI | Refer to next page |
| Series | Function | Backplate style | Lever style | Finish |
| Trilock 8 | Cylinder 90 | Eclipse 4 | Allure ALL Enchant ENC | Refer to next page |
| Series | Function | Backplate style | Lever or Knob | Finish |
| Trilock 8 | Cylinder 95 Dummy 20 | Traditional | Lever TLE Knob TRI | Refer to next page |

Trade Pack

| Series | Function | Backplate style | Lever style | Finish |
|-----------------|-------------------|----------------------|--------------------------------------|--------------------|
| Trilock 8 | Cylinder 90 | Contemporary 1 | Angular ANG Align ALI | Refer to next page |
| Series | Function | Backplate style | Lever style | Finish |
| Trilock 8 | Cylinder 90 | Traditional | Lever TLE Knob TRI | Refer to next page |

1. **Series**
Select the desired series e.g. **Trilock** 8
2. **Function**
Select the desired function e.g. **Double Cylinder** 95
3. **Backplate**
Select the desired backplate style design e.g. **Urban** 1
4. **Lever**
Select the desired lever/knob style e.g. **Aurora** AUR
5. **Finish**
Select the desired finish e.g. **Matt Black** MB
8951AURMB

Specifications

| | Lever | Dummy Lever | Knob | Dummy Knob |
|---------------------|---------|-------------|---------|-------------|
| Door Type | Timber | | | |
| Door Thickness (mm) | 45 | | | |
| Bore Hole (mm) | 54 | | | |
| Edge Bore (mm) | 22 | N/A | 22 | N/A |
| Backset (mm) | 60 | | | |
| Locking | Locking | Non-Locking | Locking | Non-Locking |

*Backplate = The plate design to which the door handle secures.

Trilock Series lever functions

| | Outside | Inside |
|---|---------|--------|
| Double Cylinder Lever and/or Knob Internal push button to lock outside lever | | |
| Dummy Lever and/or Knob Inactive lever and/or knob which is used as a door pull or matching trim. | | |

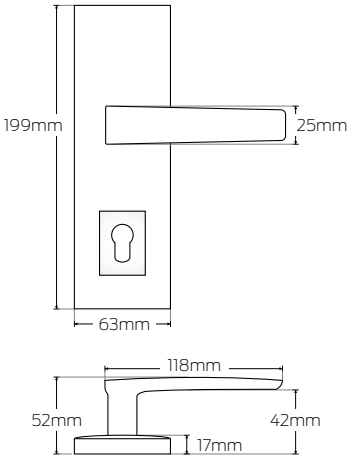
Trilock series lever/knob designs

Urban Aurora

● BSC
● MB



Product featured: 8951AURMB



Product Codes:

Urban Aurora (Visual Pack)
 8951AUR (Double Cylinder)
 8201AUR (Dummy)

Urban Aurora (Trade Pack)
 8901AUR (Double Cylinder)

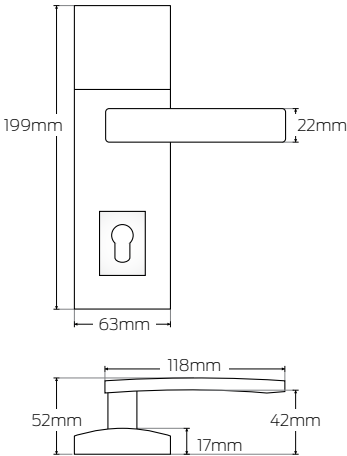
*Add finish to the end of product code
 e.g. 8951AURMB

Contemporary Angular

● BC
● MB
● SC



Product featured: 8901ANGBC



Contemporary Angular (Visual Pack)
 8951ANG (Double Cylinder)
 8201ANG (Dummy)

Contemporary Angular (Trade Pack)
 8901ANG (Double Cylinder)

*Add finish to the end of product code
 e.g. 8901ANGBC

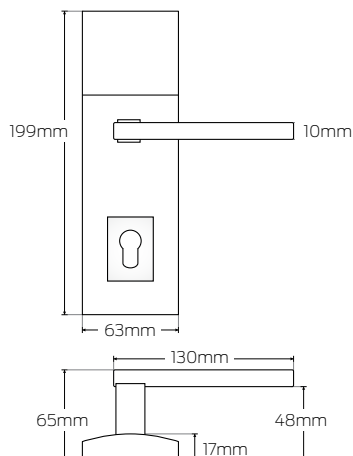
Trilock series lever/knob designs

Contemporary Align

● SC



Product featured: 8901ALISC



Product Codes:

Contemporary Align (Visual Pack)

8951ALI (Double Cylinder)
8201ALI (Dummy)

Contemporary Align (Trade Pack)

8901ALI (Double Cylinder)

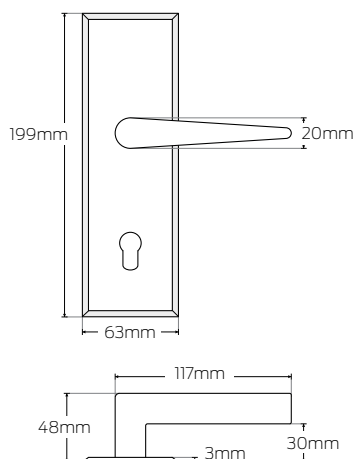
*Add finish to the end of product code
e.g. 8901ALISC

Eclipse Enchant

● SS



Product featured: 8904ENCSS



Eclipse Enchant (Trade Pack)

8904ENC (Double Cylinder)
8204ENC (Dummy)

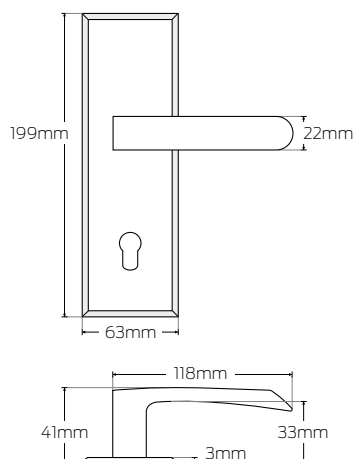
*Add finish to the end of product code
e.g. 8904ENCSS

Eclipse Allure

● SS ● PSS



Product featured: 8904ALLSS



Eclipse Allure (Trade Pack)

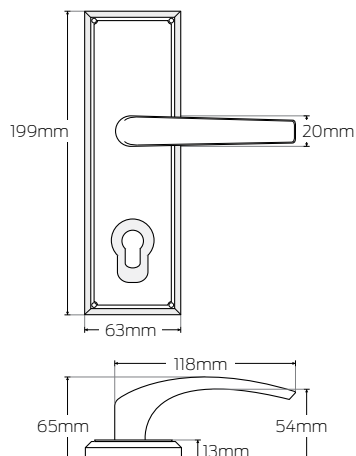
8904ALL (Double Cylinder)
8204ALL (Dummy)

*Add finish to the end of product code
e.g. 8904ALLSS

Trilock series lever/knob designs

Traditional Lever

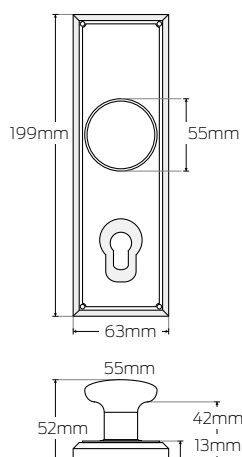
● BC ● BG ● SC



Product featured: 890TLEBG

Traditional Knob

● BC ● BG



Product featured: 895TRIBC

Product Codes:

Traditional Lever (Visual Pack)

895TLE (Double Cylinder)
820TLE (Dummy)

Traditional Lever (Trade Pack)

890TLE (Double Cylinder)

*Add finish to the end of product code
e.g. 890TLEBG

Traditional Knob (Visual Pack)

895TRI (Double Cylinder)
820TRI (Dummy)

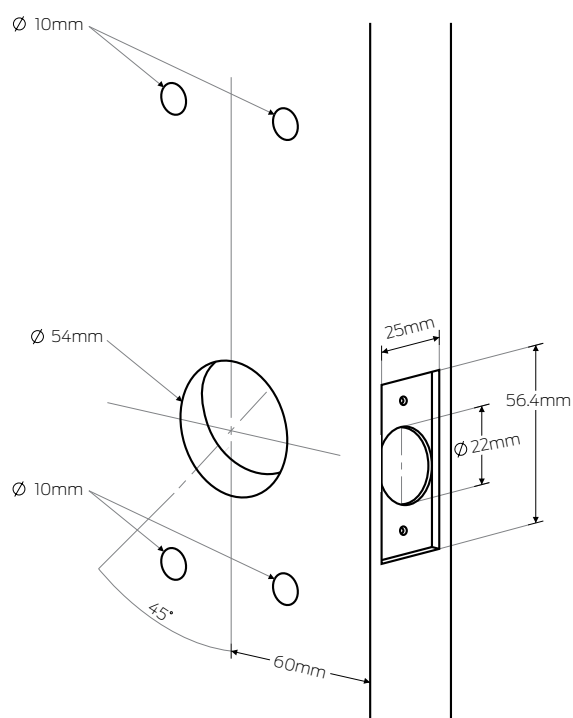
Traditional Knob (Trade Pack)

890TRI (Double Cylinder)

*Add finish to the end of product code
e.g. 895TRIBC

Trilock Series door preparation

Double cylinder door preparation



Refer to: PDGA0072



For more information visit
www.gainsboroughhardware.com.au

Gainsborough

Trilock Omni

Internal and External doors

Explore our range of single and double handled external Omni Pull Handles range with our 3-in-1 Trilock technology made from 316 grade stainless steel or go with the Oblong Pull Handle range for both internal and external doors.



Features

- High quality construction to withstand changing weather conditions and salt spray
- Lock body can be easily re-handed at point of installation to ensure turn-button is on the inside
- Available in matt black and stainless steel finishes
- Complimentary with Gainsborough Trilock series

Specifications Guide

*Trilock function Cylinder is Single and Double Cylinder.
*Product code format works only horizontal from left to right in chosen row.

| Series | Function | Size | Trilock Style | Finish |
|-----------------------|-------------------------------------|---------------|--|--------------------|
| Trilock Omni 8 | Dummy 20 Cylinder 90 | 600mm 5 | Allure ALL Enchant ENC Back to Back BB | Refer to next page |
| Series | Function | Size | Trilock Style | Finish |
| Trilock Omni 8. | Dummy 20 Cylinder 90 | 450mm 6 | Accent Allure ALL Back to Back BB | Refer to next page |

- 1. Series**
Select the desired series e.g. **Trilock Omni** 8
- 2. Function**
Select the desired function e.g. **Double Cylinder** 90
- 3. Size**
Select the desired size e.g. **600mm** 5
- 4. Pull Handle**
Select the desired Trilock Style e.g. **Allure** ALL
- 5. Finish**
Select the desired finish e.g. **Matt Black** MB
8905ALLMB

Specifications

| | Allure/Accent | Enchant | Back to Back |
|----------------------------|-----------------|---------|--------------|
| Door Type | Timber or Metal | | |
| Door Thickness (mm) | 45 | | |
| Bore Hole (mm) | 54 | | |
| Backset (mm) | 60 | | |
| Locking | Locking | | |

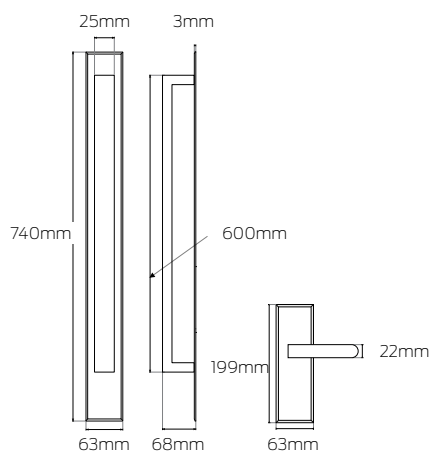
Omni Trilock designs

Trilock Omni Allure

● SS ● MB



Product featured: 8205ALLMB

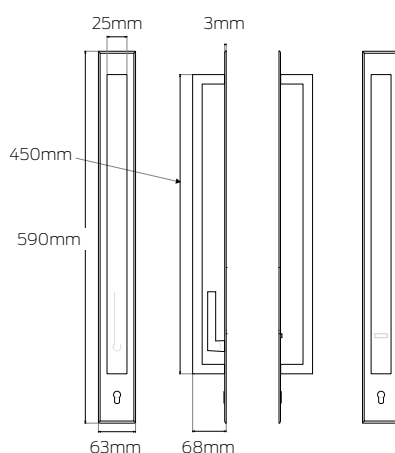


Trilock Omni Accent Allure

● SS ● MB



Product featured: 8906BBMB

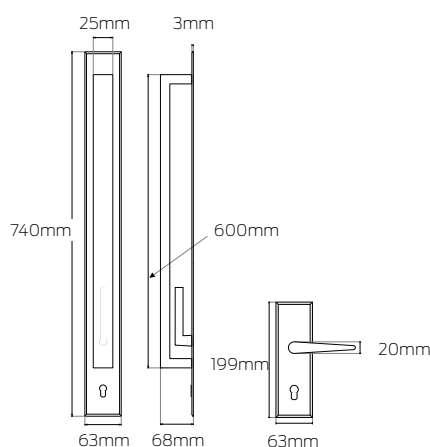


Trilock Omni Enchant

● SS ● MB



Product featured: 8905ENCSS



Product Codes:

Trilock Omni Allure

8905ALL (Double Cylinder Entrance Set)

8205ALL (Dummy Entrance Set)

*Add finish to the end of product code

e.g. 8205ALLMB

Trilock Omni Accent Allure

8206ALL (Allure Dummy Entrance Set)

*Add finish to the end of product code

e.g. 8906BBMB

Trilock Omni Enchant

8905ENC (Double Cylinder Entrance Set)

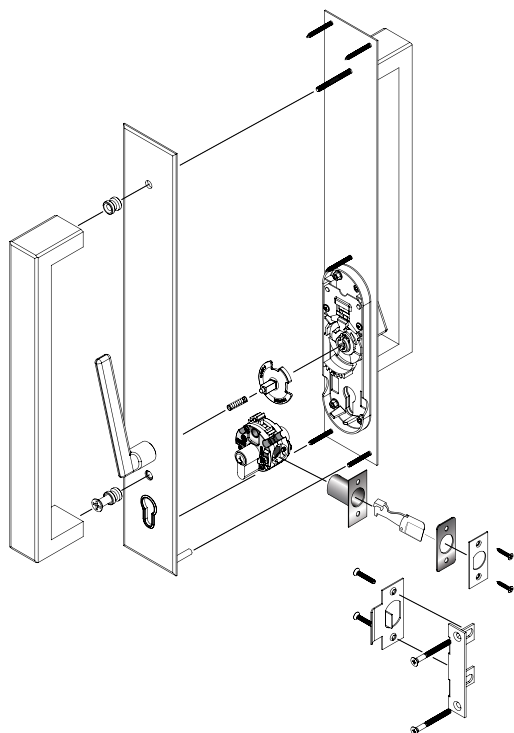
8205ENC (Dummy Entrance Set)

*Add finish to the end of product code

e.g. 8905ENCSS

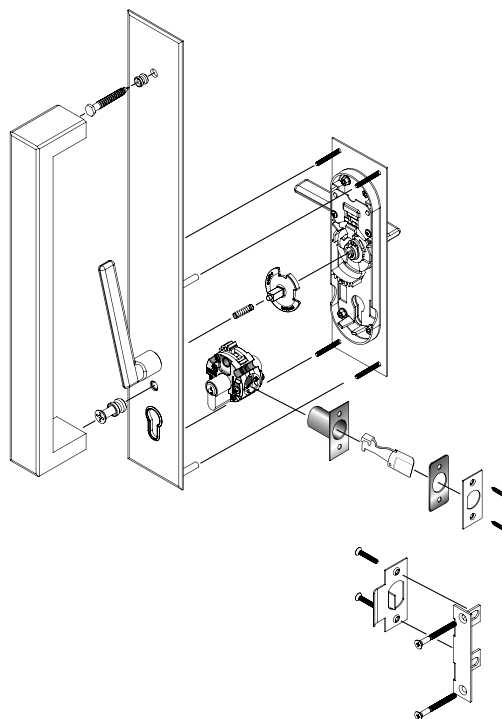
Trilock Omni Door preparation

Back to Back



Refer to: PAIT 147 NOV '12

Single Pull Handle with Trilock lever



Refer to: PAIT 148 NOV '12



For more information visit
www.gainsboroughhardware.com.au

Gainsborough

Pull Handles

Internal and External doors



Features

- High quality construction to withstand changing weather conditions and salt spray
- Concealed fixing for a simple and clean look
- Available in stainless steel and matt black finishes

Gainsborough offers a total home solution for all types of doors, with easy installation.

The front door pull handle entrance set has all the components to make your home secure while adding style to the facade. Our Pull Handles offer superior styling and when selected with a Gainsborough mortice lock, combines to create unparalleled protection and security without compromising style.

Product Featured:
Oblong 450mm Pull Handle in Stainless Steel - OBL450PHSS

Specifications Guide

*Product code format works only horizontal from left to right in chosen row.

| Series | Function style | Pull Handle | Finish |
|----------------------|--|--|--------------------|
| Pull Handles | Oblong OBL | 450mm 450PH 600mm 600PH | Refer to next page |
| Series | Function style | Pull Handle | Finish |
| Pull Handles 9 | Commercial 266 | 600mm PH600 750mm PH750 | Refer to next page |
| Series | Function style | Pull Handle | Finish |
| Pull Handles 9 | Horizon 248 | 600mm PH600 750mm PH750 | Refer to next page |
| Series | Function style | Pull Handle | Finish |
| Pull Handles 9 | Horizon370 648 Horizon520 648 | 370 PH370 SET PHSET370 520 PH520 | Refer to next page |
| Series | Function style | Pull Handle | Finish |
| Pull Handles 9 | Curved 282 | Curved PH600 | Refer to next page |
| Series | Function style | Pull Handle | Finish |
| Pull Handles | Circular CIRC Semi SEMI | 200mm 200PH | Refer to next page |
| Series | Function style | Pull Handle | Finish |
| Pull Handles | Linear LIN | 356mm 356PH | Refer to next page |
| Series | Function style | Pull Handle | Finish |
| Pull Handles | Angled ANGL | 230mm 230PH | Refer to next page |
| Series | Function style | Pull Handle | Finish |
| Pull Handles | Rectangle RECT | 120mm 120PH | Refer to next page |
| Series | Function style | Pull Handle | Finish |
| Pull Handles | Ornate ORN | 230mm 230PH | Refer to next page |

*Products in black box will not be available once stock has been depleted.

1. Series

Select the desired series e.g. **Pull Handle** 9

2. Function

Select the desired function style e.g. **Commercial Grade** 266

3. Pull Handle

Select the desired pull handle size e.g. **Pull Handle 750mm** PH750

4. Finish

Select the desired finish e.g. **Stainless Steel** SS
9266PH750SS

Specifications

Oblong Pull Handles

| | Oblong 450 | Oblong 600 |
|----------------------------|--|------------|
| Door Type | Timber | |
| Door Thickness (mm) | 45 | |
| Bore Hole (mm) | 25 | |
| Backset (mm) | 60mm(desired) | |
| Locking | Non-Locking | |
| Additional | Recommended for installation with a Neue series deadbolt (sold separately) 1846SM (Single Cylinder) 1851SM (Double Cylinder) *484RLS Roller Latch required | |

Commercial Oblong Pull Handles

| | Commercial Oblong 600 | Commercial Oblong 750 |
|----------------------------|--|-----------------------|
| Door Type | Timber | |
| Door Thickness (mm) | 35-50 | |
| Bore Hole (mm) | 25 | |
| Backset (mm) | 60mm(desired) | |
| Locking | Non-Locking | |
| Additional | Recommended for installation with a Neue series deadbolt (sold separately) 1846SM (Single Cylinder) 1851SM (Double Cylinder) *484RLS Roller Latch required | |

Horizon Pull Handles

| | Horizon 370 | Horizon 520 | Horizon 600 | Horizon 750 |
|----------------------------|--|-------------|-------------|-------------|
| Door Type | Timber | | | |
| Door Thickness (mm) | 35-50 | | | |
| Backset (mm) | 60mm(desired) | | | |
| Locking | Non-Locking | | | |
| Additional | Available with a Neue Deadbolt, Roller Mortice Lock and Escutcheons (sold separately) | | | |

Specifications

| | Ornate 230 | Linear 356 | Curved 600 |
|---------------------|---|------------|------------|
| Door Type | Timber | | |
| Door Thickness (mm) | 35-50 | | |
| Backset (mm) | 60mm(desired) | | |
| Locking | Non-Locking | | |
| Additional | Available with a Neue Deadbolt, Roller Mortice Lock and Escutcheons (sold separately) | | |

| | Rectangle 120 | Circular 200 | Semi-circular 200 | Angled 230 |
|---------------------|---|--------------|-------------------|------------|
| Door Type | Timber | | | |
| Door Thickness (mm) | 35-50 | | | |
| Backset (mm) | 60mm(desired) | | | |
| Locking | Non-Locking | | | |
| Additional | Available with a Neue Deadbolt, Roller Mortice Lock and Escutcheons (sold separately) | | | |

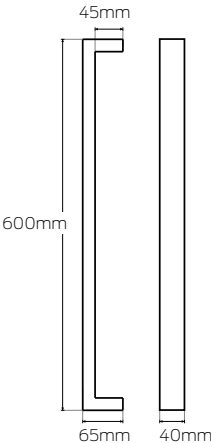
Pull Handle designs

Commercial Grade 600mm Oblong Pull Handle

● SS ● MB



Product featured: 9266PH600MB



Product Codes:

Commercial Grade Oblong 600mm
9266PH600 (Single - 1 per pack)
9266BBSET600 (Entrance set - 2 per pack)

*Add finish to the end of product code
e.g. 9266PH600**MB**

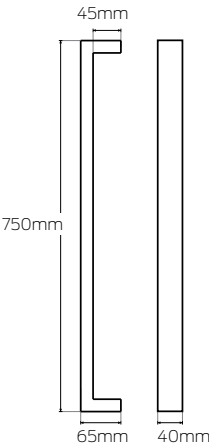
Pull Handle designs

Commercial Grade 750mm Oblong Pull Handle

● SS



Product featured: 9266PH750SS

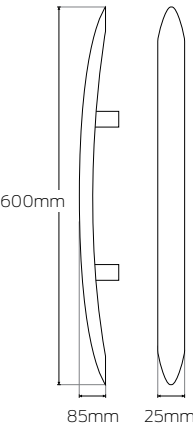


Curved 600mm Pull Handle

● SS



Product featured: 9282PH600SS

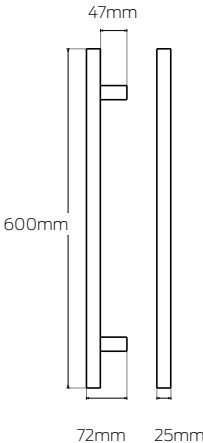


Horizon 600mm Pull Handle

● SS



Product featured: 9248PH600SS



Product Codes:

Commercial Grade Oblong 750mm

9266PH750 (Single - 1 per pack)

*Add finish to the end of product code
e.g. 9266PH750SS

Curved Pull Handle 600mm

9282PH600 (1 per pack)

*Add finish to the end of product code
e.g. 9282PH600SS

Horizon 600mm Pull Handle

9248PH600 (1 per pack)

*Add finish to the end of product code e.g.
9248PH600SS

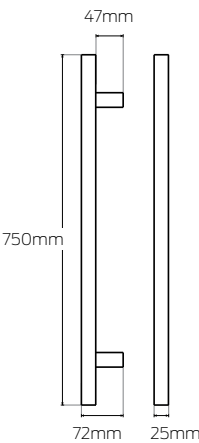
Pull Handle designs

Horizon 750mm Pull Handle

● SS



Product featured: 9248PH750SS



Product Codes:

Horizon 750mm Pull Handle

9248PH750 (1 per pack)

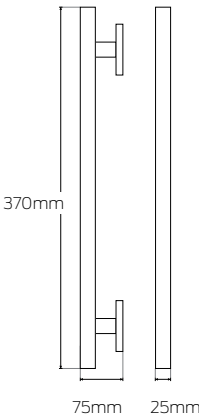
*Add finish to the end of product code e.g.
9248PH750SS

Horizon 370mm Pull Handle

● CP ● SC



Product featured: 9648PH370SC



Horizon 370mm Pull Handle

9648PH370 (Single - 1 per pack)

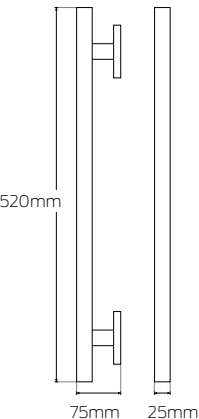
*Add finish to the end of product code
e.g. 9648PH370SC

Horizon 520mm Pull Handle

● CP ● SC



Product featured: 9648PH520CP



Horizon 520mm Pull Handle

9648PH520 (Single - 1 per pack)

*Add finish to the end of product code e.g.
9648PH520CP

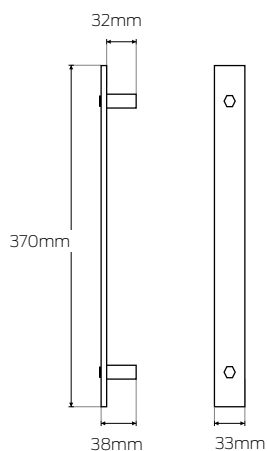
Pull Handle designs

Linear 356mm Pull Handle

● SS



Product featured: LIN356BBSETSS



Product Codes:

Linear 356mm Pull Handle

LIN356PH (Single - 1 per pack)
LIN356BBSET (Dual pack)

*Add finish to the end of product code
e.g. LIN356BBSETSS

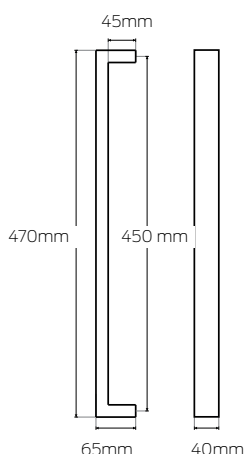
***Linear Pull Handles will not be available once stock is depleted.**

Oblong 450mm Pull Handle

● SS ● MB



Product featured: OBL450PHMB



Oblong 450mm Pull Handle

OBL450PH (Dual pack set)
OBL450PHENT (Entrance set)

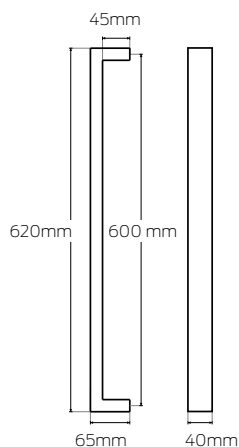
*Add finish to the end of product code e.g.
OBL450PHMB

Oblong 600mm Pull Handle

● SS ● MB



Product featured: OBL600PHMB



Oblong 600mm Pull Handle

OBL600PH (Dual pack set)
OBL600PHENT (Entrance set)

*Add finish to the end of product code e.g.
OBL600PHMB

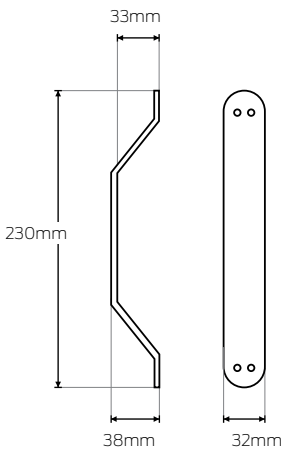
Pull Handle designs

Angled 230mm Pull Handle

● SS ● MB



Product featured: ANGL230PHMB

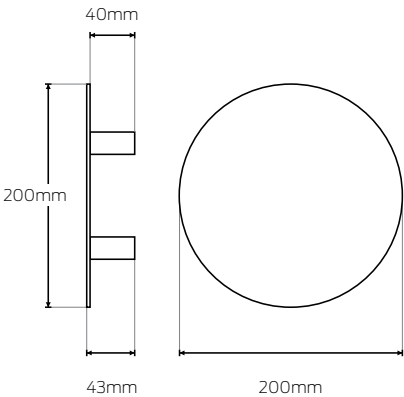


Circular 200mm Pull Handle

● SS ● MB



Product featured: CIRC200PHSS

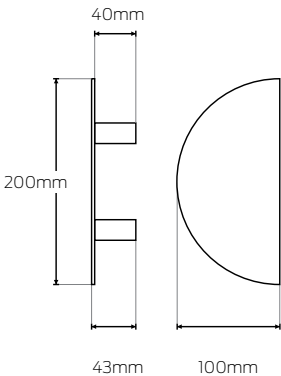


Semi-Circular 200mm Pull Handle

● SS ● MB



Product featured: SEMI200PHMB



Product Codes:

Angled 230mm Pull Handle

ANGL230PH

*Add finish to the end of product code e.g. ANGL230PHMB

*Angled Pull Handles will not be available once stock is depleted.

Circular 200mm Pull Handle

CIRC200PH

*Add finish to the end of product code e.g. CIRC200PHSS

Semi-Circular 200mm Pull Handle

SEMI200PH

*Add finish to the end of product code e.g. SEMI200PHMB

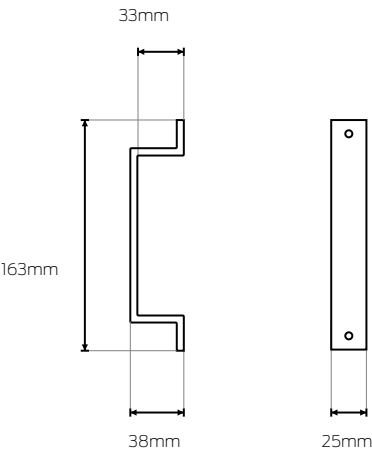
Pull Handle designs

Rectangle 120mm Pull Handle

● SS ● MB



Product featured: RECT120PHSS



Product Codes:

Rectangle 120mm Pull Handle

RECT120PH

*Add finish to the end of product code
e.g. RECT120PHSS

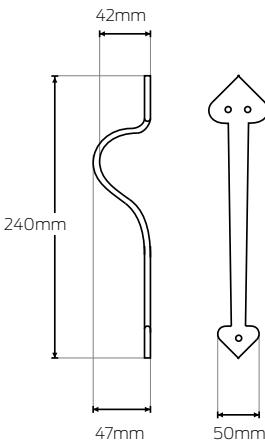
*Rectangle Pull Handles will not be available once stock is depleted.

Ornate 230mm Pull Handle

● BL



Product featured: ORN230PHMB



Ornate 230mm Pull Handle

ORN230PH

*Add finish to the end of product code
e.g. ORN230PHBL

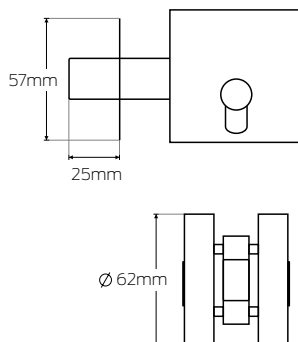
*Ornate Pull Handles will not be available once stock is depleted.

Pull Handle accesories

*No spare components are available

Deadbolt Square

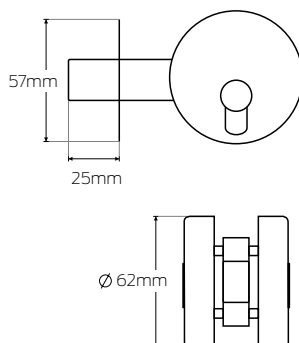
● MB ● SC ● BC



Product featured: 1851SMMBV

Deadbolt Round

● MB ● SC ● BC ● BSC



Product featured: 1946SMBC

Product Codes:

Deadbolt Square

1846SM (Single Cylinder)

1851SM (Double Cylinder)

*Add finish to the end of product code
e.g. 1851SMBC

*Add V for Visual Pack to the end of product
code e.g. 1851SMBCV

*484RLSS Roller Latch required for pull
handles and accessories

Deadbolt Round

1946SM (Single Cylinder)

1951SM (Double Cylinder)

*Add finish to the end of product code
e.g. 1946SMBC

*Add V for Visual Pack to the end of
product code e.g. 1946SMBCV

*484RLSS Roller Latch required for
pull handles and accessories



For more information visit
www.gainsboroughhardware.com.au

Gainsborough

TradePro

Lever and Entrance sets



TradePro™ is a trade range from Gainsborough, a leading distributor of high-quality door hardware and access solutions in Australia.

TradePro™ is an affordable door hardware range developed for residential homes delivering security, quality and performance. TradePro™ is available in contemporary styles and finishes for the everyday needs of homes including entrance door locksets, internal lever & knob, and deadbolts for added security.

Features

- TradePro™ can be builder keyed and used with the Gainsborough GR9 Keying System for added convenience, delivering a complete solution.
- TradePro™ Bela and Adel Locksets feature a contemporary yet functional style for any home and are available in entrance, privacy, passage and dummy functions.
- TradePro™ Bela and Adel Long Plate Entrance Sets feature a contemporary style for your entrance and external doors.
- TradePro™ Cass and Dani are contemporary style deadbolts in round and square styles and are designed for home with a modern lock.

Specifications Guide

*Product code format works only horizontal from left to right in chosen row.

Trade Pack

| | | | | |
|-------------------------------------|--|---|---|-------------------------------------|
| Series TradePro™ 14 | Function Passage set 00 Privacy set 10 Dummy 20 Entrance 40 | Lever style Adel PROADE Bela PROBEL | Rose (Bela) Round PROBEL Square PROSQBEL | Finish Refer to next page |
| Series TradePro™ 14 | Function Long Plate 401 | Lever style Adel LP ADE Bela LP BEL | Finish Refer to next page | |
| Series TradePro™ 14 | Function Passage set 00 Privacy set 10 Dummy 05 Entrance 40 | Lever style Tristan PROTRI | Finish Refer to next page | |
| Series TradePro™ 14 | Function Passage set 00 Privacy set 10 Dummy 05 Entrance 40 | Knob style Colton PROCOL | Finish Refer to next page | |
| Series TradePro™ 14 | Function Single Cylinder 45 Double Cylinder ... 50 | Deadbolt style Cass PROCAS Dani PRODAN | Finish Refer to next page | |

1. Series
Select the desired series e.g. TradePro™ 14
2. Function
Select the desired function e.g. Passage set 00
3. Lever style
Select the desired lever design e.g. Adel PROADE
4. Finish
Select the desired finish e.g. Matt Black MB
1400PROADEMB

Specifications

| | Passage | Privacy | Dummy | Deadbolt | Entrance |
|---------------------|-------------|---------|-------------|----------|----------|
| Door Type | Timber | | | | |
| Door Thickness (mm) | 32-45 | | N/A | 32-45 | |
| Bore Hole (mm) | 50-54 | | N/A | N/A | 50-54 |
| Edge Bore (mm) | 25 | | N/A | N/A | 25 |
| Backset (mm) | 60 | | | N/A | 60 |
| Locking | Non-Locking | Locking | Non-Locking | Locking | Locking |
| Rose (mm) | 64 | | | | |

TradePro Series functions

*Icons show right handed levers

| | |
|---|--|
| Passage set (latch included) Both levers always unlocked. | |
| Privacy set (latch included) Internal push button to lock outside lever with emergency release. | |
| Dummy set Inactive lever which is used as a door pull or matching trim. | |
| Entrance set Key to lock and unlock for entrance doors. | |
| Deadbolt Secured bolt lock that requires key to lock. Available in double and single | |

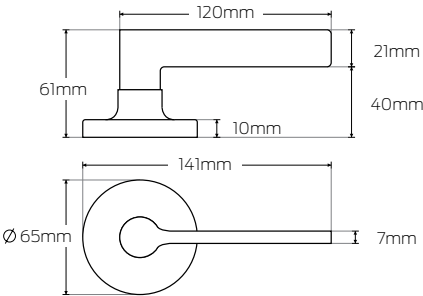
TradePro Series designs

Adel

● SC ● MB ● BC



Product featured: 1400PROADEMB



Product Codes:

Adel (Trade Pack)
1400PROADE (Passage set)
1410PROADE (Privacy set)
1420PROADE (Dummy)
1440PROADE (Entrance set)

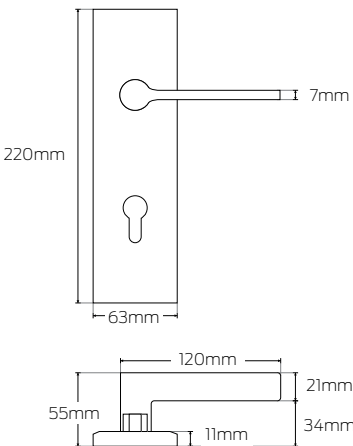
*Add finish to the end of product code
e.g. 1400PROADEMB

Adel Long Plate

● SC ● MB ● BC



Product featured: 14401ADEMB



Adel Long Plate (Trade Pack)
14401ADE (Long Plate Entrance set)

*Add finish to the end of product code
e.g. 14401ADEMB

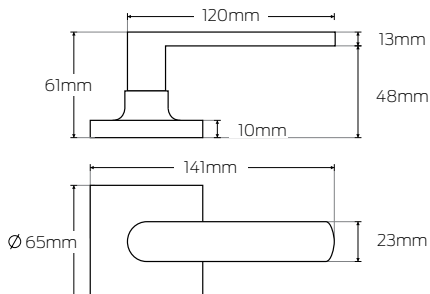
TradePro Series designs

Bela

● SC ● MB ● BC



Product featured: 1410PROSQBELSC



Product Codes:

Bela (Trade Pack)

Round Rose:

1400PROBEL (Passage set)
1410PROBEL (Privacy set)
1420PROBEL (Dummy)
1440PROBEL (Entrance set)

Square Rose:

1400PROSQBEL (Passage set)
1410PROSQBEL (Privacy set)
1420PROSQBEL (Dummy)
1440PROSQBEL (Entrance set)

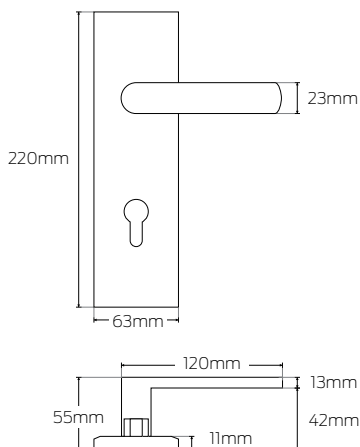
*Add finish to the end of product code
e.g. 1410PROSQBELSC

Bela Long Plate

● SC ● MB ● BC



Product featured: 14401BELBC



Bela (Trade Pack)

14401BEL (Long Plate Entrance set)

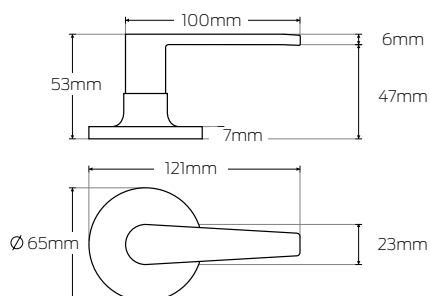
*Add finish to the end of product code
e.g. 14401BELBC

Tristan

● SC ● BC



Product featured: 1405PROTRISC



Tristan (Trade Pack)

1400PROTRI (Passage set)
1410PROTRI (Privacy set)
1405PROTRI (Dummy)
1440PROTRI (Entrance set)

*Add finish to the end of product code
e.g. 1405PROTRISC

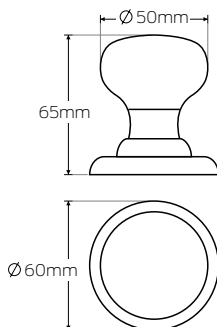
TradePro Series designs

Colton (Knob set)

● SS ● PSS



Product featured: 1440PROCOLSS



Product Codes:

Colton (Trade Pack)

1400PROCOL (Passage set)
1410PROCOL (Privacy set)
1405PROCOL (Dummy)
1440PROCOL (Entrance set)

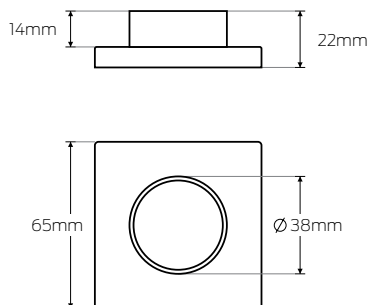
*Add finish to the end of product code
e.g. 1440PROCOLSS

Dani (Deadbolt)

● SC ● MB ● BC



Product featured: 1450PRODANBC



Dani (Trade Pack)

1445PRODAN (Single Cylinder)
1450PRODAN (Double Cylinder)

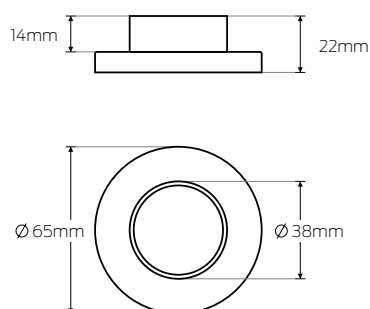
*Add finish to the end of product code
e.g. 1450PRODANBC

Cass (Deadbolt)

● SC ● MB ● BC



Product featured: 1445PROCASMB



Cass (Trade Pack)

1445PROCAS (Single Cylinder)
1450PROCAS (Double Cylinder)

*Add finish to the end of product code
e.g. 1445PROCASMB



For more information visit
www.gainsboroughhardware.com.au

Gainsborough

Sliding Cavity Door Sets



Features

- Privacy set lock or unlock with turn button function and external emergency release
- 60mm backset
- Available in a variety of finishes and styles

Gainsborough extensive range of sliding cavity door sets feature stylish square or round escutcheons in a plethora of contemporary finishes, from satin brass through matt black to aged brushed copper, finishes to match your other hardware.

Easy to install and use, the range includes passage and privacy and connecting sets.

Specifications Guide

*Product code format works only horizontal from left to right in chosen row.

Visual & Trade Pack

| Style | Function | Finish | Pack |
|----------------------|--|--------------------|---|
| Circular 39 | Passage 6 Privacy 5 Connecting 7 | Refer to next page | Visual Pack C Trade Pack S |
| Style | Function | Finish | Pack |
| Square 38 | Passage 6 Privacy 5 | Refer to next page | Visual Pack C Trade Pack S |
| Style | Function | Finish | Pack |
| Rectangular 39 | Passage 4 Privacy 3 | Refer to next page | Visual Pack C Trade Pack S |

1. Style
Select the desired style e.g. **Circular** 39
2. Function
Select the desired function e.g. **Passage** 6
3. Finish
Select the desired finish e.g. **Matt Black** MB
4. Visual or Trade Pack
Select the desired pack e.g. **Visual Pack** C
396MBC

Specifications

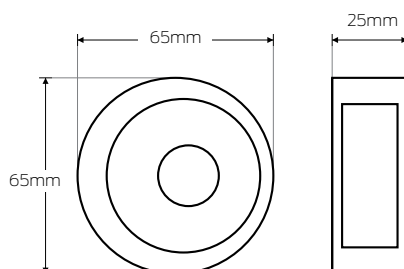
| | Passage | Privacy | Connecting |
|---------------------|-------------|---------|------------|
| Door Type | Timber | | |
| Door Thickness (mm) | 35-45 | 32-45 | N/A |
| Bore Hole (mm) | 54 | 54 | 54 |
| Edge Bore (mm) | 25 | | |
| Backset (mm) | 60 | | |
| Locking | Non-Locking | Locking | Locking |

Sliding cavity sets designs

*Trade Packs only available in specific finishes

Circular sliding cavity set

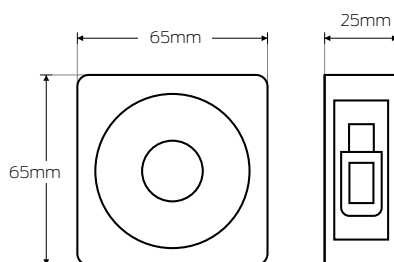
● SC ● MB ● BC ● BSC ● ABC



Product featured: 395ABCC

Square sliding cavity set

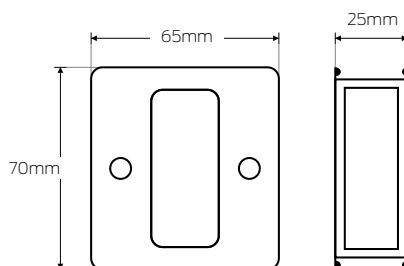
● SC ● MB ● BC



Product featured: 385BCC

Rectangular sliding cavity set

● SC ● PB ● BC



Product featured: 393PBC

Product Codes:

Circular sliding cavity set

395 (Privacy)
396 (Passage)
397 (Connecting)

*Add finish to the end of product code e.g.
395ABC

*Add C at the end for Visual Pack
e.g. 395ABCC

Add S at the end for Trade Pack
e.g. 395ABCS

*Latch included

Square sliding cavity set

385 (Privacy)
386 (Passage)

*Add finish to the end of product code e.g.
385BC

*Add C at the end for Visual Pack
e.g. 385BCC

Add S at the end for Trade Pack
e.g. 385BCS

*Latch included

Rectangular sliding cavity set

393 (Privacy)
394 (Passage)

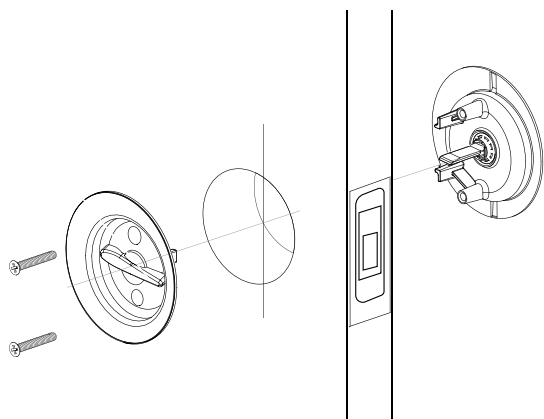
*Add finish to the end of product code
e.g. 393PB

*Add C at the end for Visual Pack
e.g. 393PBC

*Latch included

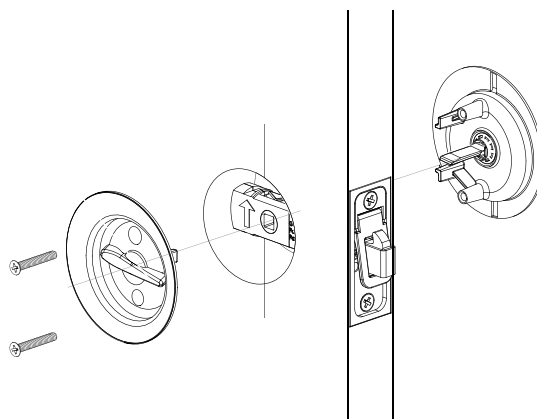
Sliding cavity set door preparation

Passage



Refer to: PDGA0030 for Passage

Privacy



Refer to: PDGA0029 for Privacy

Sliding cavity set accessories

Strike Plate to Suite 385, 395, or 397

● BC ● SC

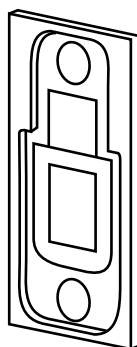


Product Featured: 395SP

*Add finish to the end of product code
e.g. 395SPBC

Face Plate and Pull Tab Assembly kit for 386 and 396

● BC ● PB ● SC



Product Featured: 396SP

*Add finish to the end of product code
e.g. 396SPBC



For more information visit
www.gainsboroughhardware.com.au

Gainsborough

Flush Pulls

Internal Sliding Door Access



Features

- The Gainsborough flush pulls are made to suit residential environments and complement the
- Available in a range of finishes
- Easy to install with a screwdriver.

Gainsborough's range of Flush Pulls are the perfect accompanying hardware which will work seamlessly throughout your home. With stylish finishes and easy to install our Flush Pulls are ideal for kitchen pantries, ensuite bathrooms and sliding doors.

Flush pulls can have a significant visual impact on the design and bring a lot of beauty to the space. Choose from a selection of finishes and find the one that suits your project best.

Specifications Guide

*Product code format works only horizontal from left to right in chosen row.

| | | | |
|--------------------------------------|--|-------------------------------------|--|
| Series 730 730FP | Style Size 150mm 150 250mm 250 350mm 350 | Finish Refer to next page | |
| Series Flush Pull 3 | Function Style Rectangular 92 Radius 90 | Finish Refer to next page | Pack Visual Pack C Trade Pack S |
| Series Flush Pull 66 | Function Style Ring 00 | Finish Refer to next page | Pack Visual Pack C |

1. Series

Select the desired series e.g. 3 3

2. Style size

Select the desired style size e.g. Rectangular 92

3. Finish

Select the desired finish e.g. Aged Brushed Copper ABC

4. Pack

Select the desired pack e.g. Visual Pack C
392ABCC

Specifications

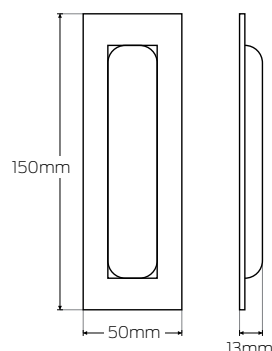
| | 730 | Ractangular | Radius | Radius |
|----------------------------|-------------|-------------|--------|--------|
| Door Type | Timber | | | |
| Door Thickness (mm) | 35 - 50 | | | |
| Bore Hole (mm) | N/A | | | |
| Edge Bore (mm) | N/A | | | |
| Backset (mm) | N/A | | | |
| Locking | Non-Locking | | | |

Flush Pull Series designs

*Visual Pack **C** (2 per pack)
 *Trade Pack **S** (1 per pack)
 *Trade Packs only available in specific finishes

730 Flush Pull

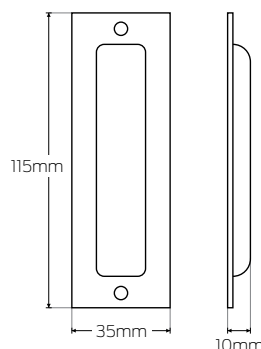
● SB ● MB ● ABC ● SS ● SG



Product featured: 730FP150SB

Rectangular Flush Pull

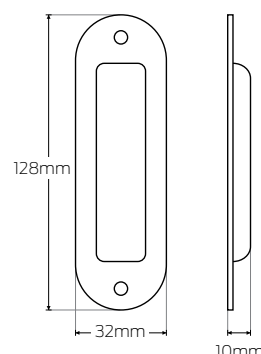
● ABC ● BC ● BG ● BSC ● SC ● SG ● SB ● MB



Product featured: 392SGS

Radius Flush Full

● BC ● BG ● MB ● SC



Product featured: 390BGS

Product Codes:

730 Flush Pull

730FP150 (150mm)
 730FP250 (250mm)
 730FP350 (350mm)

*Add finish to the end of product code
 e.g. 730FP150**SB**

*730 Flush Pull does not require pack code
 e.g. 730FP150**SB**

Rectangular Flush Pull

392

*Add finish to the end of product code
 e.g. 392**SGS**

*Add **S** to the end of product code for Trade Pack e.g. 392**SGS**

Radius Flush Pull

390

*Add finish to the end of product code
 e.g. 390**BGS**

*Add **C** to the end of product code for Visual Pack e.g. 6600**SCC**

*Add **S** to the end of product code for Trade Pack e.g. 390**BGS**

Flush Pull Series designs

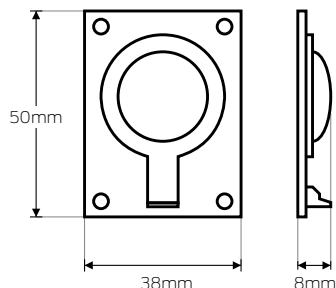
*Visual Pack **C** (2 per pack) only for Ring Flush Pull

Ring Flush Pull

● SC ● BC



Product featured: 6600SCC



Product Codes:

Ring Flush Pull 6600

*Add finish to the end of product code
e.g. 6600**SC**

*Add **C** to the end of product code for Visual
Pack e.g. 6600**SCC**



For more information visit
www.gainsboroughhardware.com.au

© Allegion 2023. All rights reserved. Material and design specifications subject to change without notice. Product colour reproduction is as near to actual product colour as production methods allow. Warning: Products in this brochure are the subject of registered designs and patents. This brochure relates to Australian and New Zealand products only and some product, design or specifications may differ in other countries.

Gainsborough

Classic Knobs

Internal sets



Traditional in appearance our internal door knobs are suitable for many rooms throughout your home.

With passage, privacy and dummy trim options available, they will suit doors in bedrooms, kitchens, laundries and bathrooms. Doorknobs come in a number of different finishes.

Features

- Available in three classic finishes
- The smooth round design of the classic Warm White Passage doorknob will work seamlessly with the eclectic mix of colours, patterns and textures of a Boho style home
- The all-round shape of the passage doorknob will create a clean classic look

Specifications Guide

*Product code format works only horizontal from left to right in chosen row.

Visual Pack

| Series | Function | Finish |
|---------------------|--|--------------------|
| Diplomat 3 | Passage set 05D Wardrobe 56D Dummy set 20D | Refer to next page |
| Series | Function | Finish |
| White 13 | Passage set 05WHI Wardrobe set 56WHI Dummy set 20WHI | Refer to next page |
| Series | Function | Finish |
| Warm White 13 | Passage set 05WAW Wardrobe set 56WAW | Refer to next page |





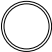
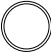
1. Series
Select the desired series e.g. **Diplomat** 3
2. Function
Select the desired function e.g. **Passage set** 05D
3. Finish
Select the desired finish e.g. **Bright Chrome** BC
305DBCBC

Specifications

| | Passage | Wardrobe | Dummy |
|---------------------|-------------|----------|-------|
| Door Type | Timber | | |
| Door Thickness (mm) | 32-45 | N/A | |
| Bore Hole (mm) | 50-54 | N/A | |
| Edge Bore (mm) | 25 | N/A | |
| Backset (mm) | 60 | N/A | |
| Locking | Non-Locking | | |
| Rose (mm) | 65 | | |

Classic Knob Series functions

*Icons show right handed levers

| | |
|--|---|
| Passage set Both knobs always unlocked. (Latches sold separately) |   |
| Wardrobe set Inactive knob which is used as a door pull or matching trim. (Latches sold separately) |   |
| Dummy set Inactive knob which is used as a door pull or matching trim. (Latches sold separately) |   |

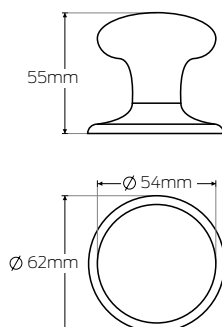
Classic Knob Series designs

Diplomat

● BG ● BC ● SC



Product featured: 305DBCBC

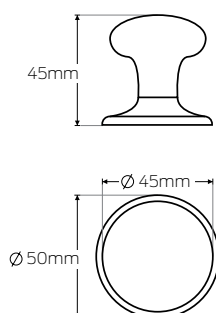


Diplomat Wardrobe Set

● BG ● BC ● SC



Product featured: 356DBCBC

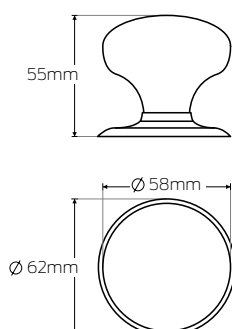


White

● BG ● BC ● SC



Product featured: 1305WHISC



Product Codes:

Diplomat

305D (Passage set)

320D (Dummy set)

*Add finish to the end of product code
e.g. 305DBCBC

***Diplomat Dummy Set will not be available once stock is depleted.**

Diplomat

356D (Wardrobe set)

*Add finish to the end of product code
e.g. 356DBCBC

***Diplomat Wardrobe Set in Bright Goldtone will not be available once stock is depleted.**

White

1305WHI (Passage set)

1320WHI (Dummy set)

*Add finish to the end of product code
e.g. 1305WHISC

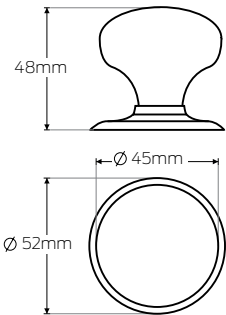
Classic Knob Series designs

White Wardrobe

● BG ● BC ● SC



Product featured: 1356WHISC

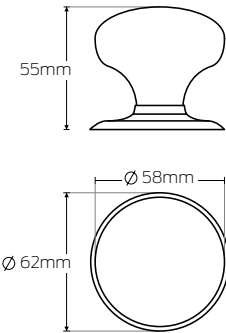


Warm White

● BG



Product featured: 1305WAWBG

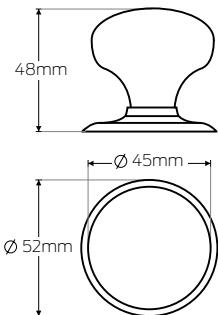


Warm White Wardrobe

● BG



Product featured: 1356WAWBG



Product Codes:

White
1356WHI (Wardrobe set)

*Add finish to the end of product code
e.g. 1356WHISC

Warm White
1305WAW (Passage set)

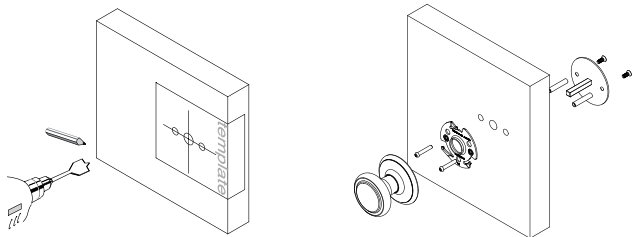
*Add finish to the end of product code
e.g. 1305WAWBG

Warm White
1356WAW (Wardrobe set)

*Add finish to the end of product code
e.g. 1356WAWBG

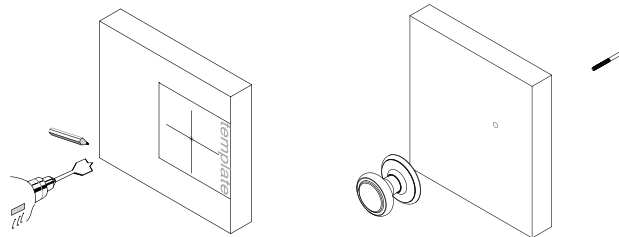
Classic Knob Series door preparation

Passage



Refer to instructions: PDGA0004

Wardrobe



Refer to instructions: PDGA0004

Classic Knob Series accessories

Classic Series Adaptor Kit

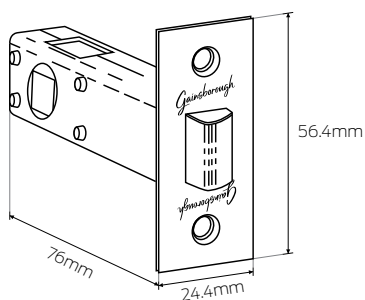
● BG ● BC ● SC



Product featured: 309BGC

480 Latch (sold separately)

● BG ● BC ● SC



Product featured: 480



For more information visit
www.gainsboroughhardware.com.au

Warranty

| | FINISHES | MECHANICAL WARRANTY | TARNISH WARRANTY |
|--|------------------|---------------------|------------------|
| GAINSBOROUGH SMART LOCK | | | |
| FREESTYLE TRILOCK SMART LOCK | ALL | 10 years | 5 years |
| *Electrical Warranty 2 years | | | |
| GAINSBOROUGH 3-IN-1 ENTRANCE / DUMMY SETS | | | |
| TRILOCK / TRILOCK OMNI SERIES | ALL | 10 years | 5 years |
| GAINSBOROUGH ENTRANCE SET | | | |
| FIRST IMPRESSIONS | ALL | 10 years | 5 years |
| GAINSBOROUGH DEADBOLTS | | | |
| NEUE SERIES | SC, MB, BC & BSC | 10 years | 5 years |
| NEUE SERIES SPECIAL FINISHES | SB & SG | 10 years | 2 years |
| CHOICE SERIES | ALL | 7 years | 2 years |
| GAINSBOROUGH LEVERS | | | |
| AVANT SERIES (QUICKFIX) | BC, BSC & MB | 15 years | 5 years |
| AVANT SERIES (QUICKFIX) SPECIAL FINISHES | SB & SG | 15 years | 2 years |
| G3 (QUICKFIX) | ALL | 10 years | 2 years |
| NEUE SERIES | BC, SC, BSC & MB | 10 years | 5 years |
| NEUE SERIES SPECIAL FINISHES | SB & SG | 10 years | 2 years |
| CHOICE SERIES | ALL | 7 years | 2 years |
| GAINSBOROUGH KNOBS | | | |
| TERRACE SERIES | ALL | 7 years | 2 years |
| GOVERNOR SERIES | ALL | 10 years | 5 years |
| CLASSIC / DIPLOMAT | ALL | 10 years | 10 years |
| GAINSBOROUGH PULL HANDLES AND MORTICE LOCKS | | | |
| OBLONG | ALL | 7 years | 2 years |
| 9200 SERIES - HORIZON / CURVED / OBLONG | ALL | 10 years | 5 years |
| SEMI / CIRCULAR | ALL | N/A | 5 years |
| RECTANGLE / ORNATE / LINEAR / ANGLED | ALL | N/A | 2 years |
| MORTICE LOCKS - 755 / 760 / 775 | ALL | 10 years | 5 years |
| TRADEPRO™ BY GAINSBOROUGH | | | |
| LEVER / LONG PLATE / KNOB / DEADBOLT | ALL | 7 years | 2 years |
| GAINSBOROUGH ACCESSORIES | | | |
| TUBULAR LATCHES | ALL | 10 years | 10 years |
| TUBULAR LATCHES SPECIAL FINISHES | SB & SG | 10 years | 2 years |
| FLOOR STOPS / WALL STOPS | MB, BC, ABC & SC | N/A | 5 years |
| FLOOR STOPS / WALL STOP SPECIAL FINISHES | SB & SG | N/A | 2 years |
| FLUSH BOLTS (150MM / 200MM) | MB, BC, PB & SC | 10 years | 5 years |
| FLUSH BOLTS SPECIAL FINISHES (150MM) | SB & SG | 10 years | 2 years |
| SECURITY BOLTS | ALL | 10 years | 10 years |
| SLIDING CAVITY DOOR SETS (CIRCULAR, SQUARE, RECTANGULAR) | ALL | 10 years | 10 years |
| FLUSH PULLS | BC, SC, MB & SS | 10 years | 10 years |
| FLUSH PULLS SPECIAL FINISHES | SB, SG & ABC | 10 years | 2 years |
| HINGES (LOOSE / FIXED) | MB, CP, SC | 10 years | 5 years |
| HINGES SPECIAL FINISHES (LOOSE / FIXED) | SB & SG | 10 years | 2 years |

Warranty

Exclusions

1. This Guarantee only applies to defects which have arisen solely from faulty materials or workmanship in the Product and does not apply to other defects however arising, including without limitation as a result of the following:

- accidental damage, abuse, misuse, maltreatment, abnormal stress or strain of the Products;
- neglect of any kind in respect of the Product;
- tarnishing and damage to or deterioration of finishes as a result of harsh or adverse conditions (including corrosive environments such as the coastal locations and large fluctuations in pressure or temperature);
- deterioration in colour and performance of polymer materials;
- fair wear and tear;
- installation or maintenance of the Products not in accordance with the instructions provided with the Products.

2. Alterations to repair of the Product other than approved by Allegion are not covered by this Guarantee (for the avoidance of doubt, attachment of accessories or use of non genuine replacement parts other than those manufactured or approved by Allegion are not covered).

3. Costs incurred by the removal, replacement or installation of the Product are not covered by this Guarantee.

4. Personal injury, property damage or economic loss, howsoever caused, will not be covered by this Guarantee.

Australian Consumer Law

In addition to this Guarantee, certain legislation (including the ACL) may give you rights which cannot be excluded, restricted or modified. This Guarantee must be read subject to such legislation and nothing in this

If Allegion fails to meet a guarantee under the ACL, your remedy for such failure may be limited to any one or more of the following at Allegion's discretion:

- replacement of the product;
- repair of the product;
- refunding the cost of the product;
- payment of reasonable costs of having the product repaired;
- payment in respect of the reduced value of the product.

As required by legislation, including the ACL, any claims for damage, or any consequential loss either directly or indirectly due to defects of any kind in a product will only be met by Allegion where the damage or loss was reasonably foreseeable by Allegion.

Our goods come with guarantees that cannot be excluded under the Australian Consumer Law. You are entitled to a replacement or refund for a major failure and for compensation for any other loss or damage. You are also entitled to have the goods repaired or replaced if the goods fail to be of acceptable quality and the failure does not amount to a major failure.

Guarantee Claims

Any defective product must be returned to the point of sale before replacement can be considered under the terms of this Guarantee. If the costs of returning any defective parts are excessive or unreasonable, please contact Allegion so that we can arrange a collection (if considered appropriate in the circumstances).

Guarantee claims can be made at the point of sale or by posting or emailing a Guarantee claim to Allegion (contact details listed below) within 3 months of the appearance of a defect. Guarantee claims under this Guarantee must include the following details:

- Date of Purchase;
- Location of Purchase;
- Proof of Purchase;
- Contact Details

Allegion's contact details are as follows:

Address: 31-33 Alfred St Blackburn VIC 3130
Email: info.au@allegion.com

Allegion (Australia) Pty Ltd
Freephone: 1800 098 094

HEAD OFFICE

31-33 Alfred Street
BLACKBURN VIC 3130
PO Box 330
NUNAWADING VIC 3131

For more information visit
www.gainsboroughhardware.com.au